

Question :

How to setup the audio of my TV2000 XP Expert so that I can see or capture Live TV correctly?

Answer :

Please follow below steps to check the audio setting :

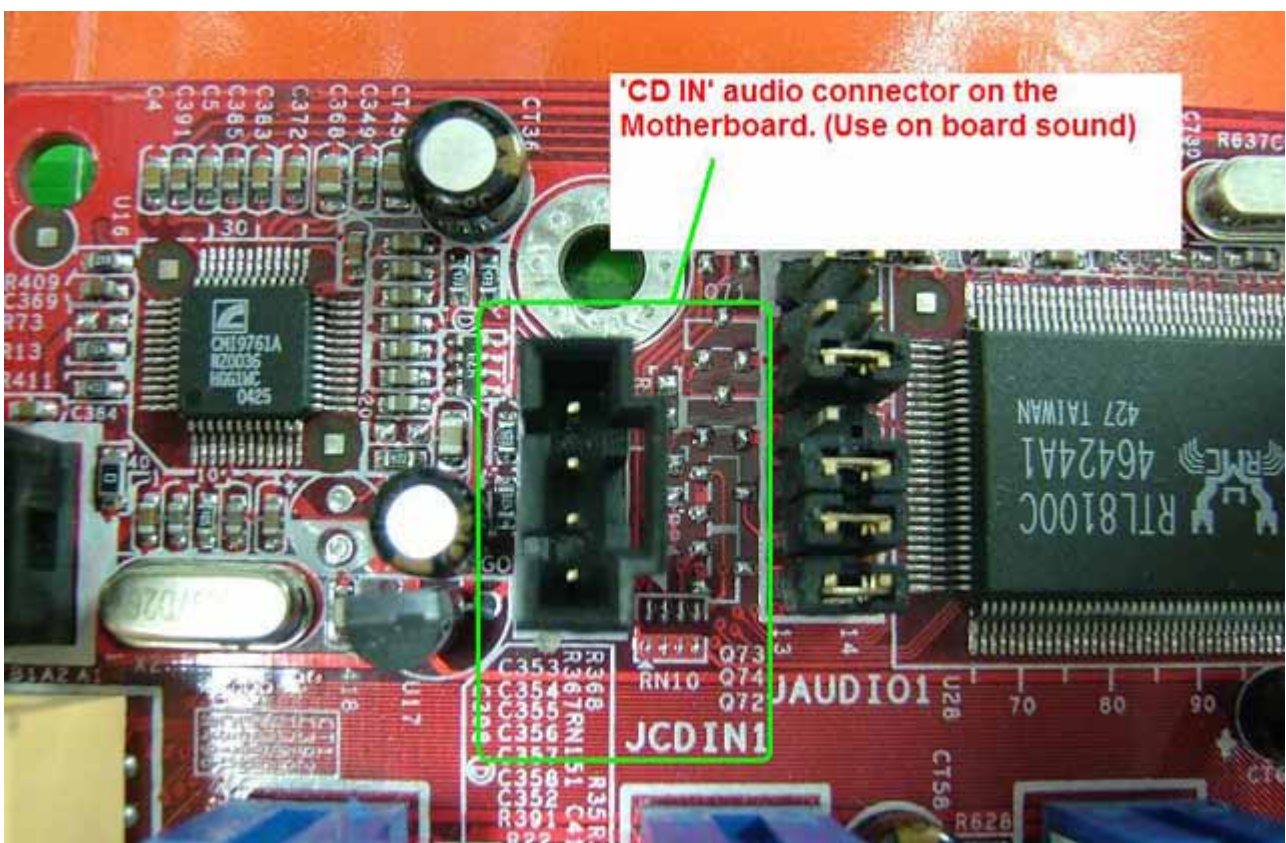
1. Before booting up the system , please check if the **audio cable** (Please see the below picture) is connecting from **audio output connector** of TV2000 XP Expert to **Aux IN** or **CD IN** of sound card / onboard sound.

audio cable :

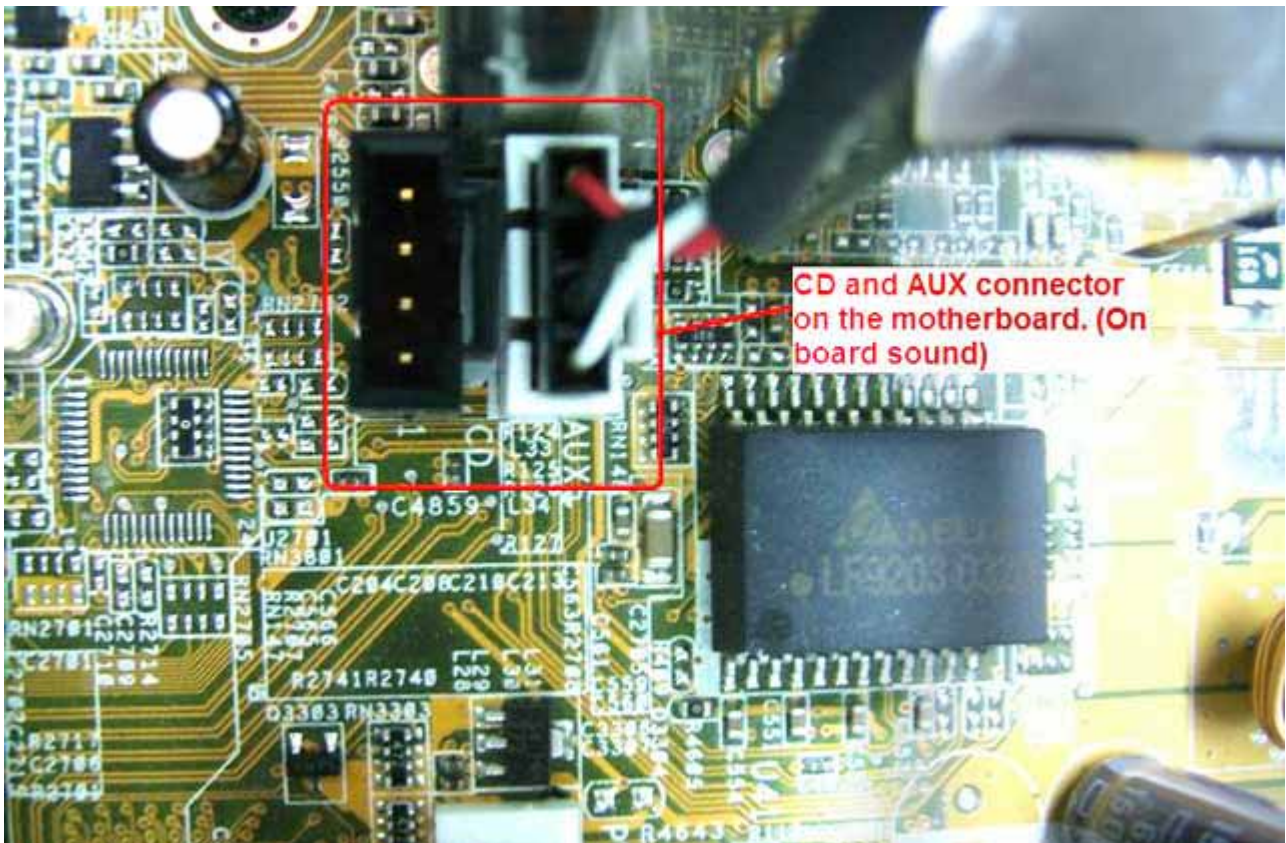


1-1 : If you use on board sound :

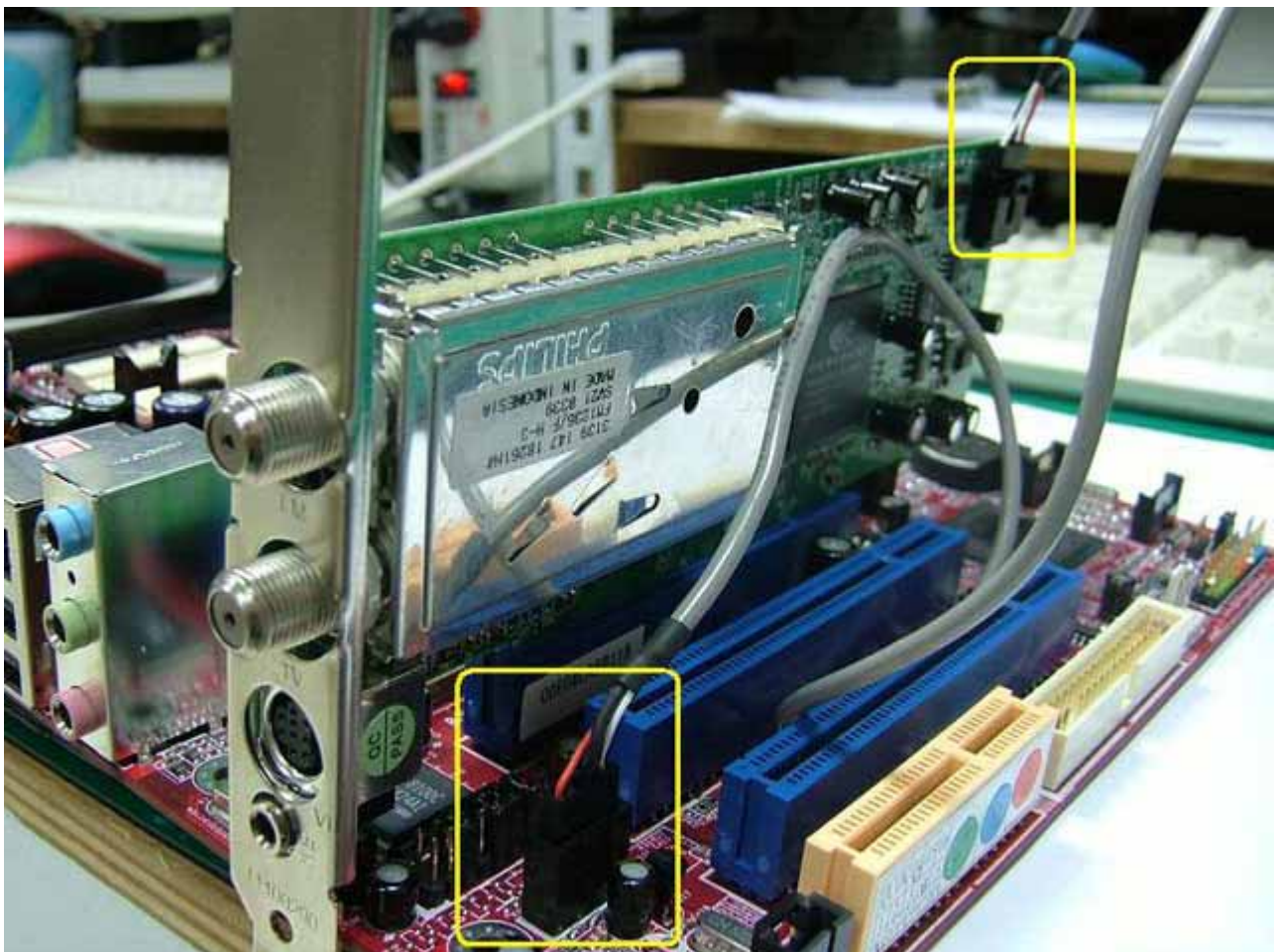
On board sound – 'CD IN' connector : (This MB has only one audio connector – CD IN)



On board sound – AUX and CD connector : (The MB has both AUX IN and CD IN connector)

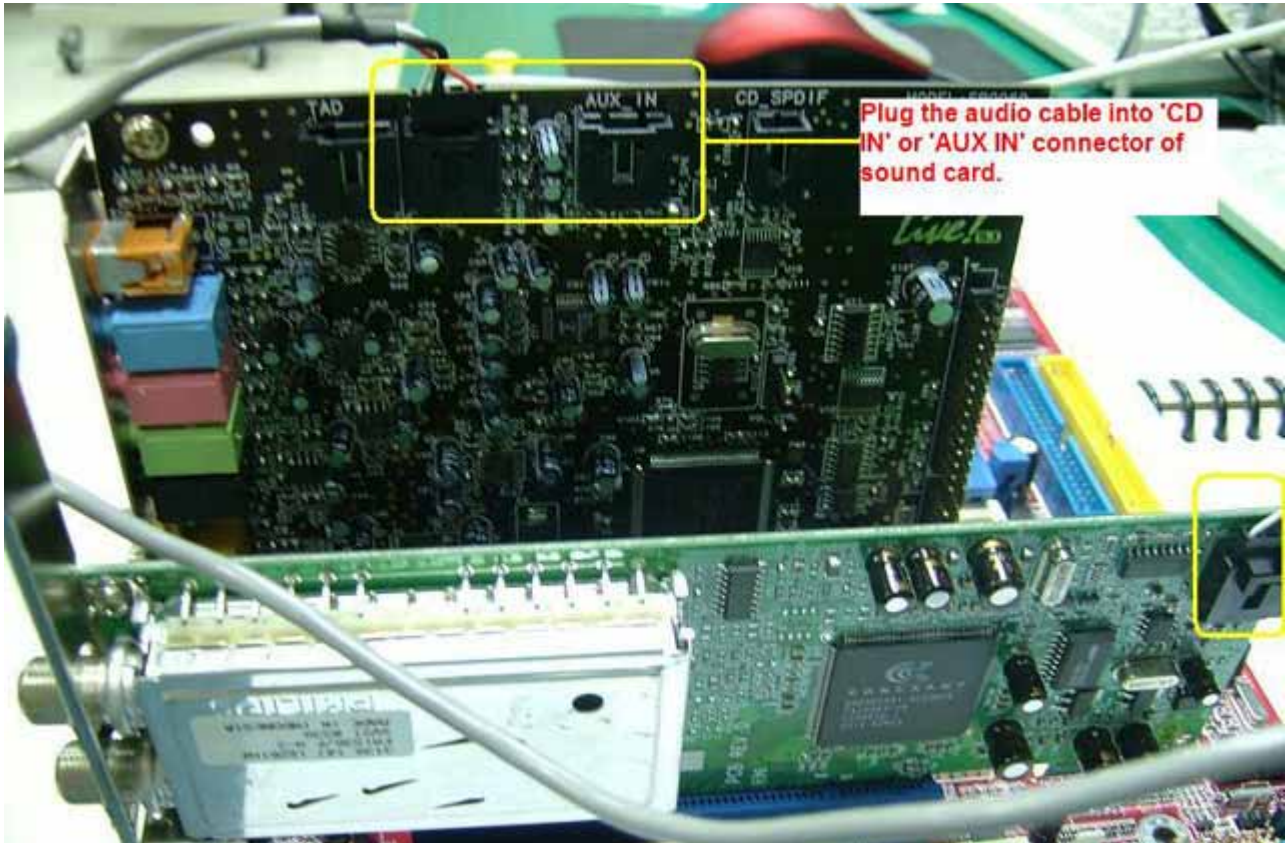


Connect the audio cable from **Audio output connector** of TV2000 XP Expert , and plug the audio cable into 'AUX IN' or 'CD IN' connector of on board sound.



1-2 : If you use **PCI sound card** :

Connect the audio cable from **Audio output connector** of TV2000 XP Expert , and plug the audio cable into '**AUX IN**' or '**CD IN**' connector of PCI sound card.



2. Start OS , open WinFast PVR , go to Configuration -> Capture Setting :

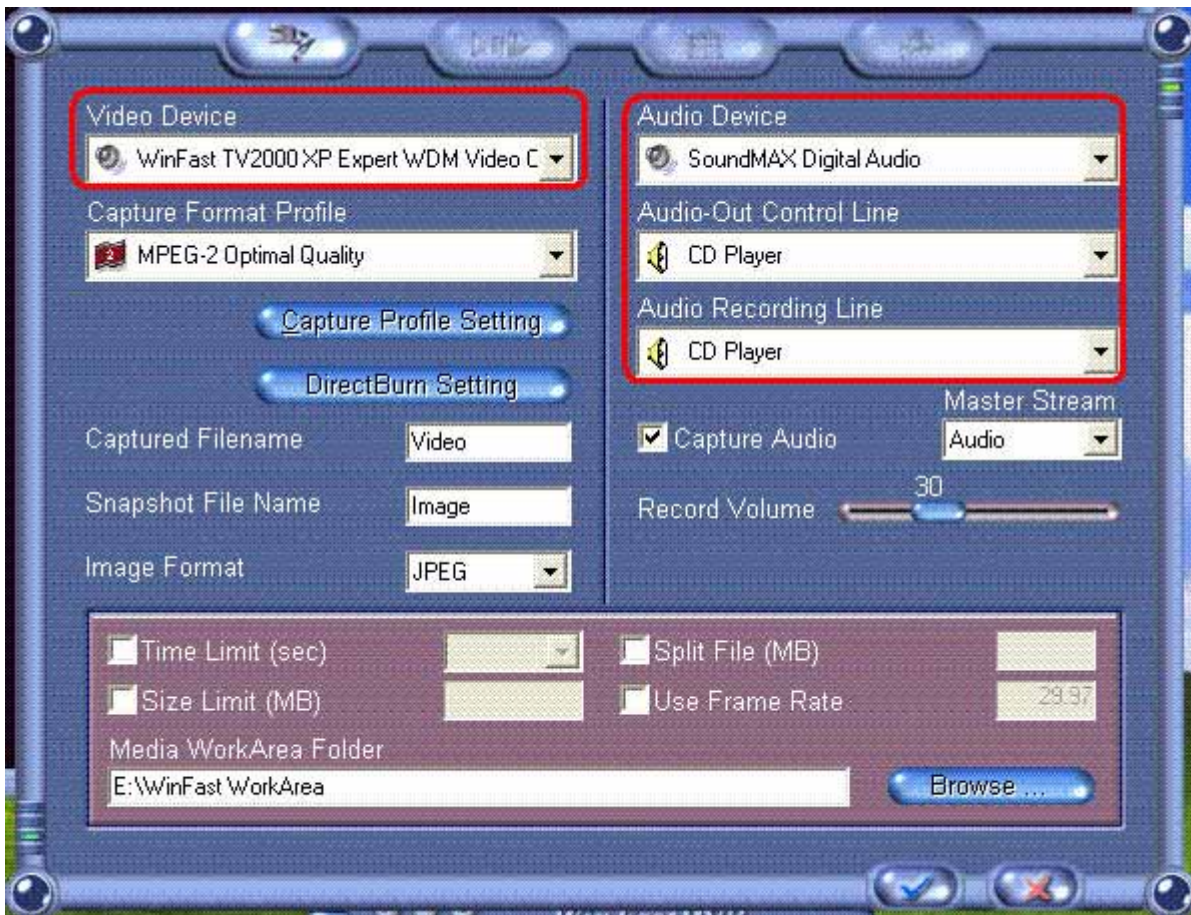
2-1 : **Audio Device** – Let you select which sound card that you want to use.

2-2 : If you plug your audio cable into 'CD IN' of PCI sound card or on board sound :

2-2-1 : **Audio-Out Control Line** – Please click on the arrow to select "CD Player".

2-2-2 : **Audio Recording Line** – Please click on the arrow to select "CD Player".

Please see below picture :



2-3 : If you plug your audio cable into 'AUX IN' of PCI sound card or on board sound :

2-3-1 : **Audio-Out Control Line** – Please click on the arrow to select "Aux".

2-3-2 : **Audio Recording Line** – Please click on the arrow to select "Aux".

Please see below picture :

