

Question:

I just download a new driver for my WinFast TV USB II Deluxe , but how to update this new driver for TV USBII Deluxe?

Answer:

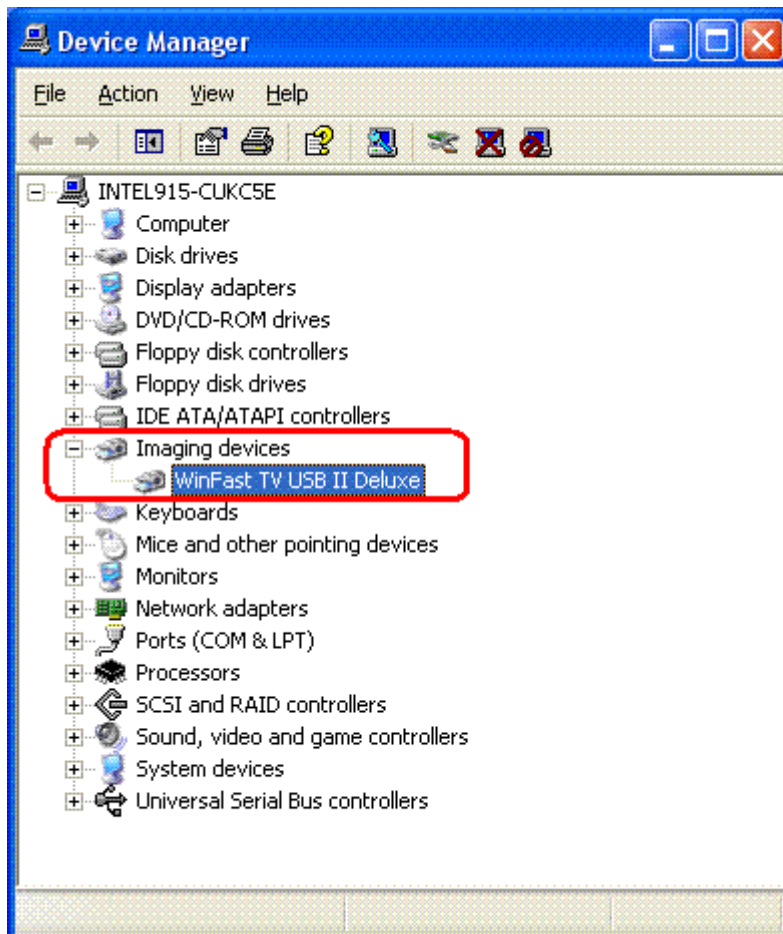
Please follow below steps to update your driver version:

(For Example : We want to update the TV USB II Deluxe WDM driver from 1.1.722.0 to 1.1.922.2)

1. Open " Device Manager" , see below picture :

Under " Imaging devices " , you will see WinFast TV USB II Deluxe device :

WinFast TV USB II Deluxe



2. Double click the mouse on " WinFast TV USB II Deluxe " , and you will get " WinFast TV USB II Deluxe Properties " as below picture :

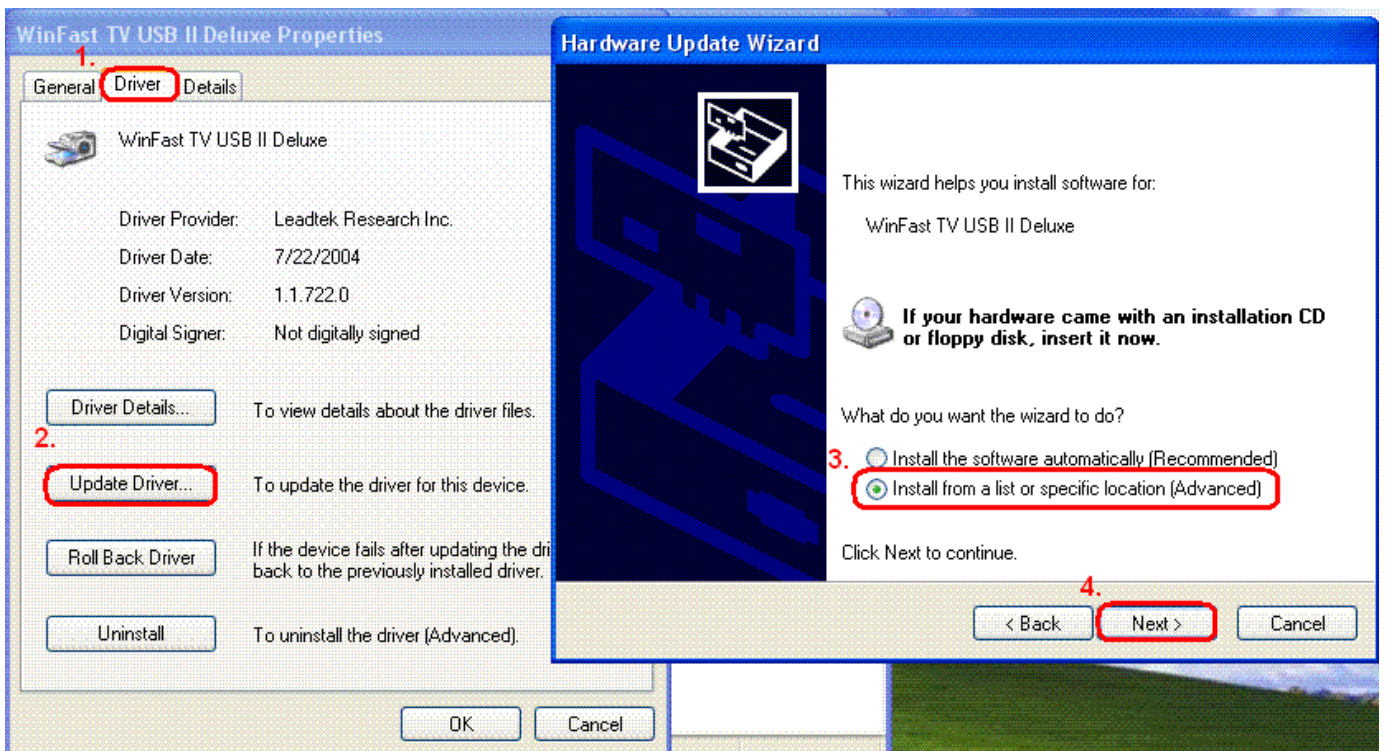
2-1. Choose " Driver"

2-2. Select " Update Driver ...", and you will get the Hardware Update Wizard about "

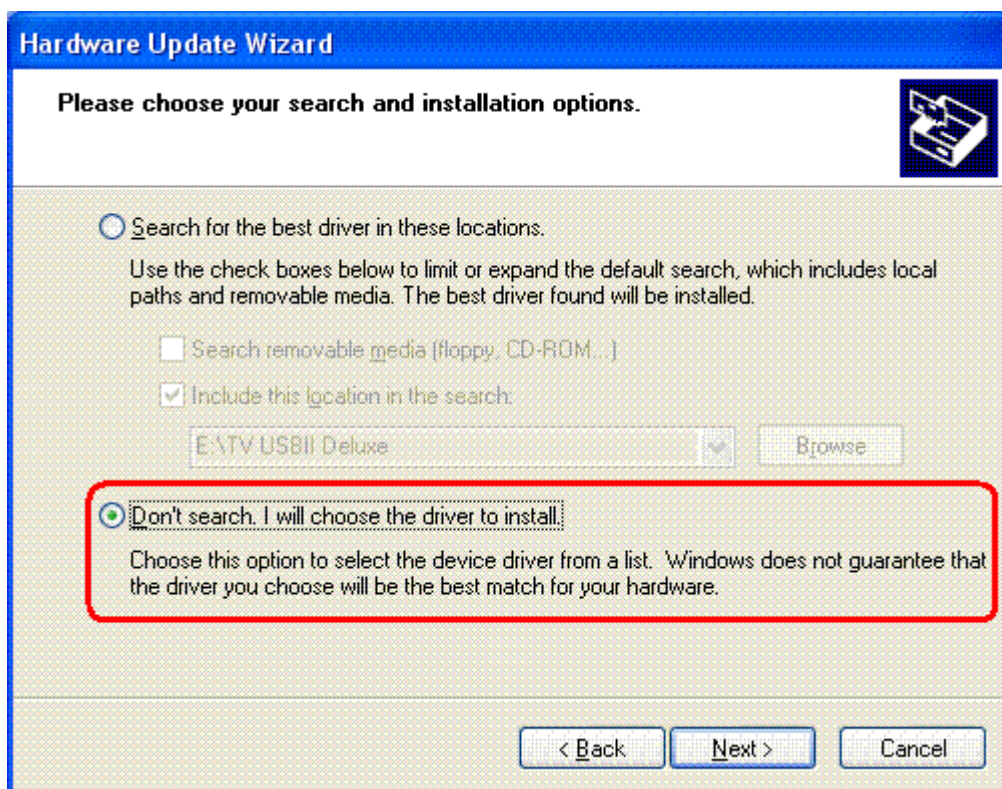
WinFast TV USB II Deluxe "

2-3. Select " Install from a list or specific location [Advanced] "

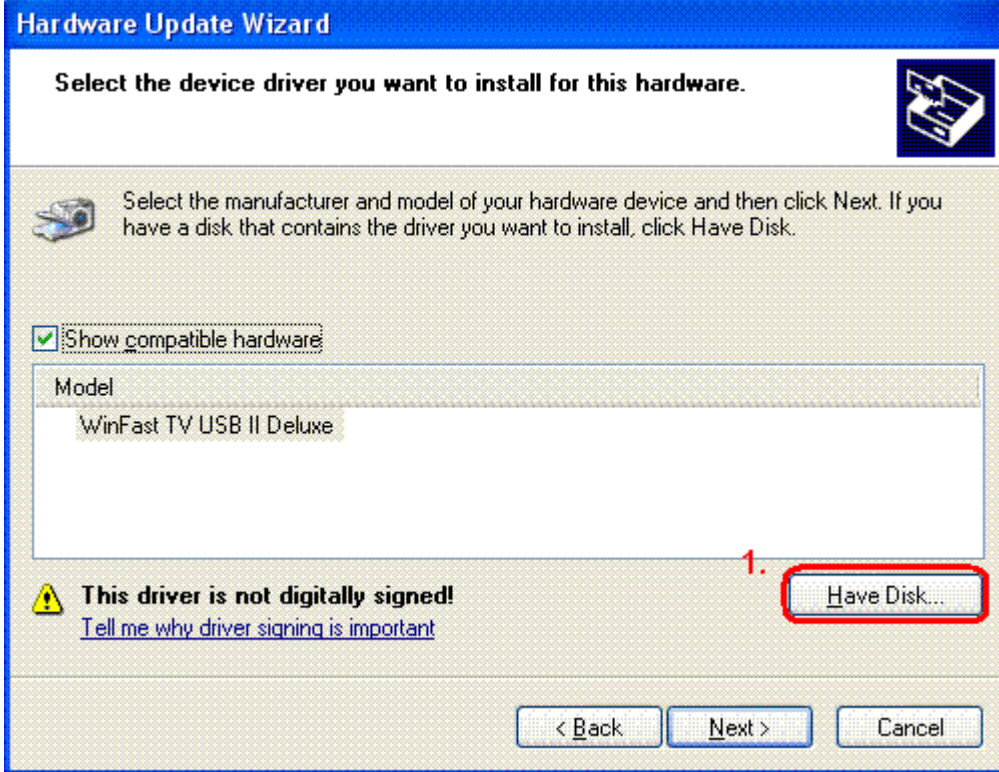
2-4. Then press " Next > " button .



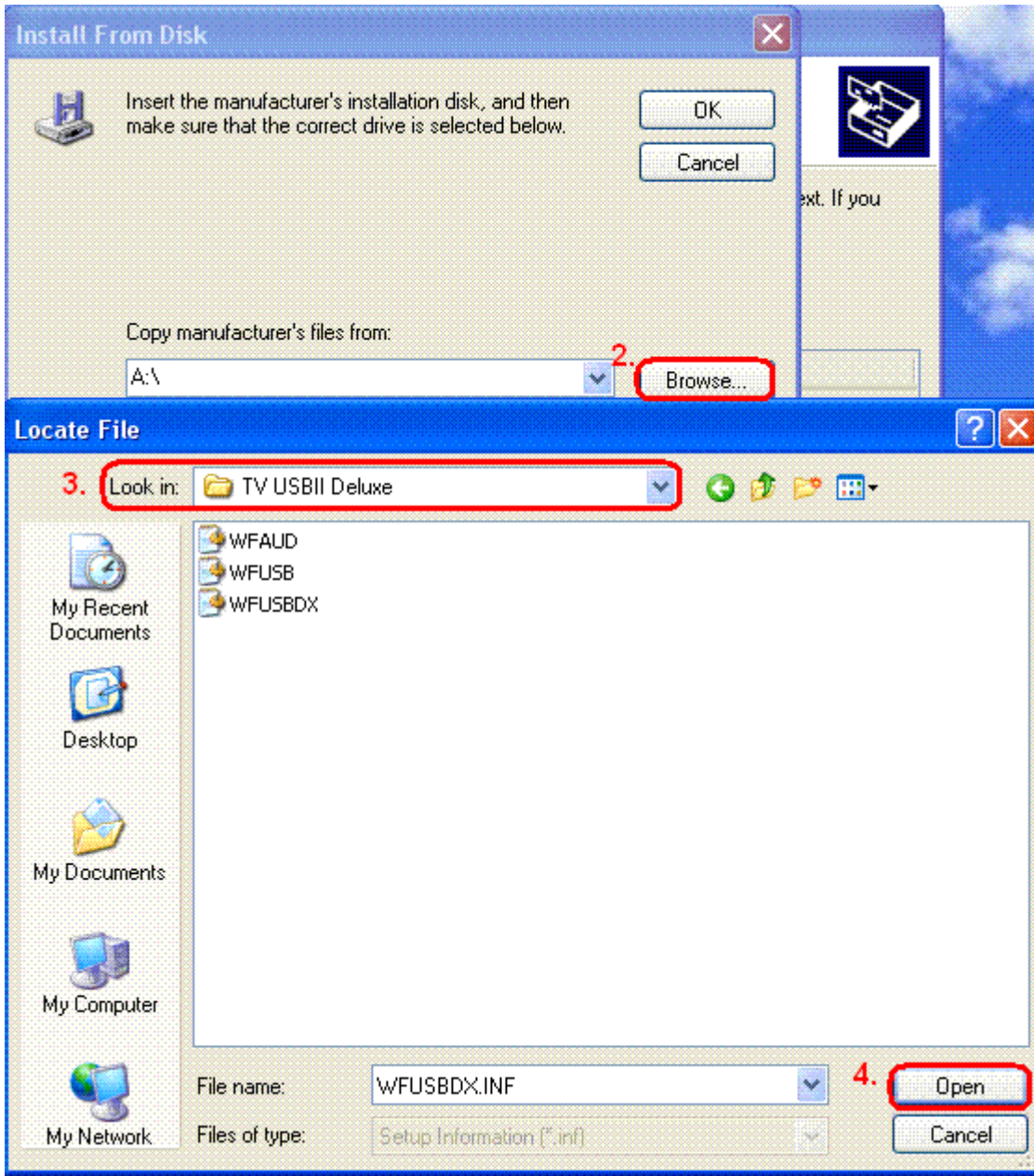
3. See the below picture , select "Don't search. I will choose the driver to install. " , then press " Next > " :



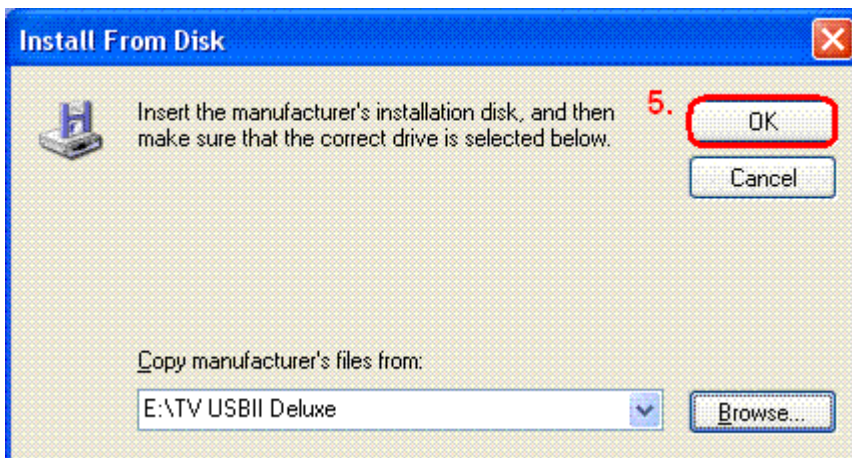
4. Then , see the below picture.
4-1. " Have Disk... " :



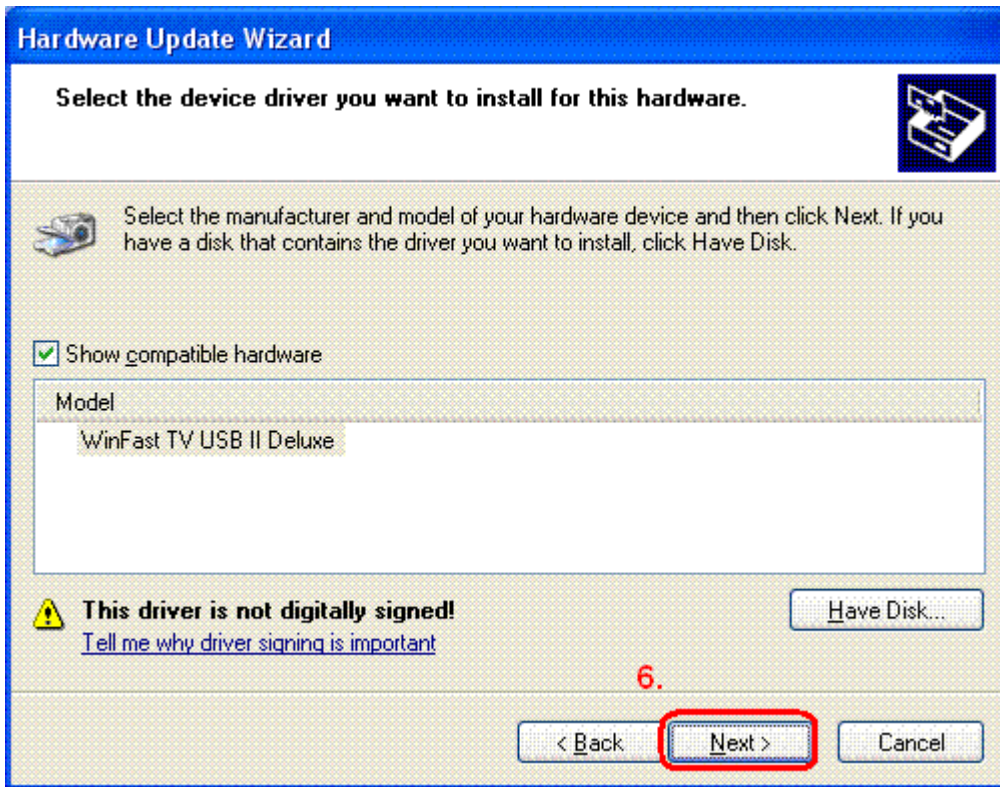
- 4-2. See " Browse... " to select the location of the latest WDM driver.
- 4-3. and the WDM driver.
- 4-4. Then press " Open "



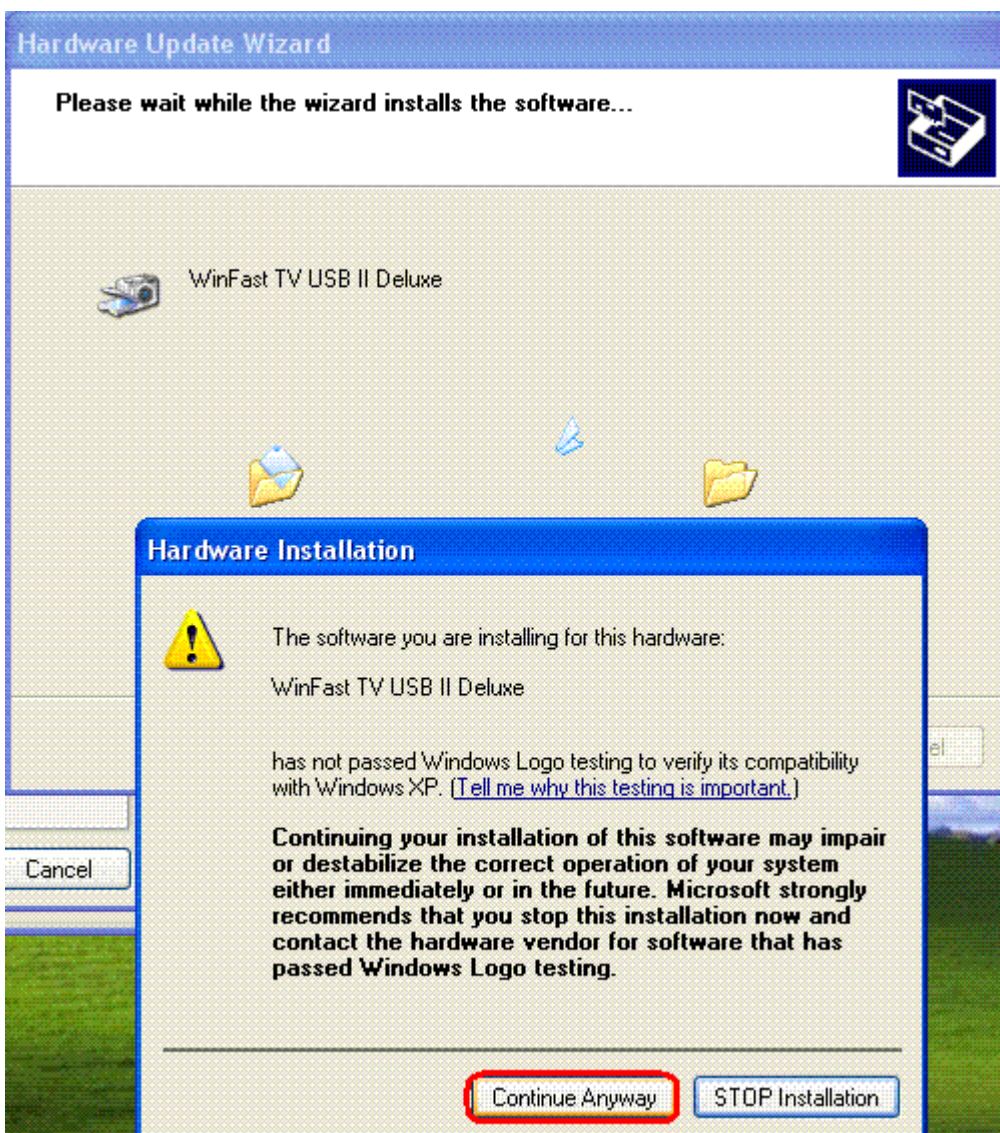
4-5. After selecting the location of TV USB II Deluxe WDM driver , press OK.



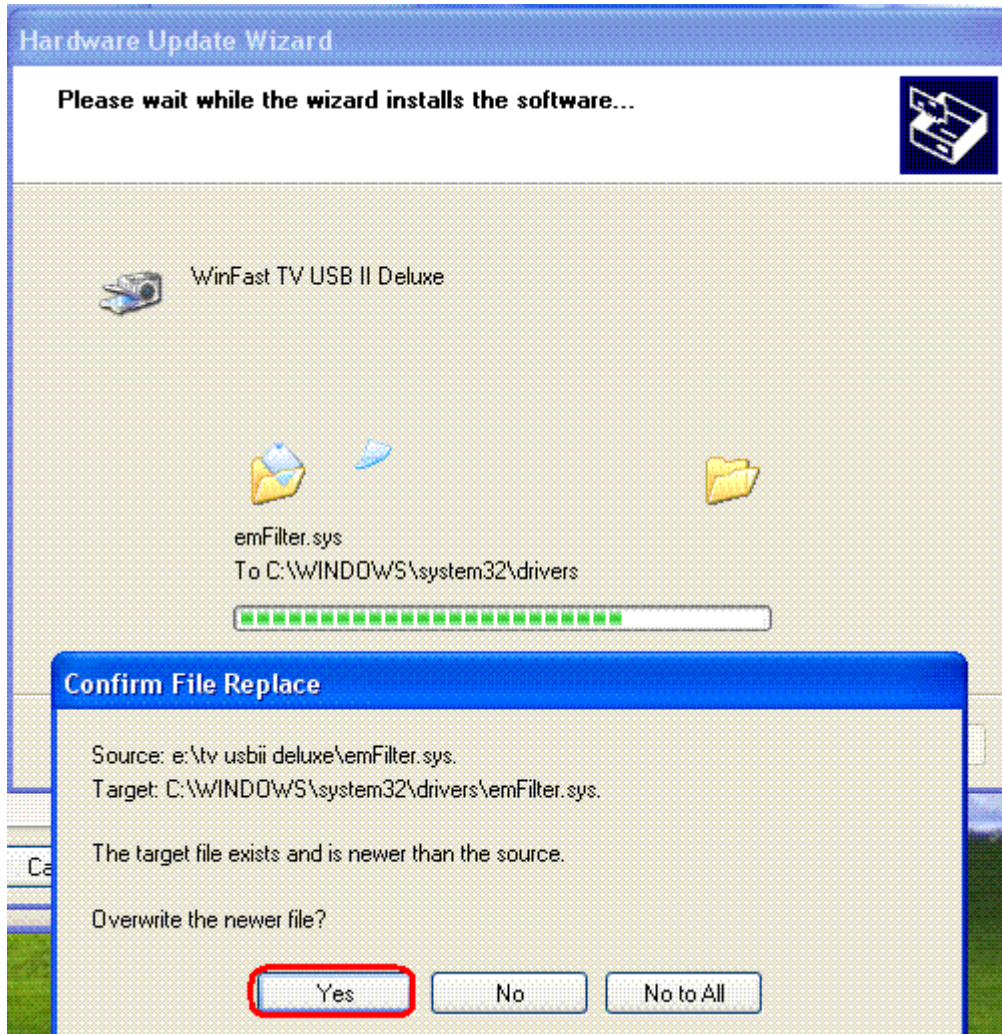
4-6. Press " Next > " .



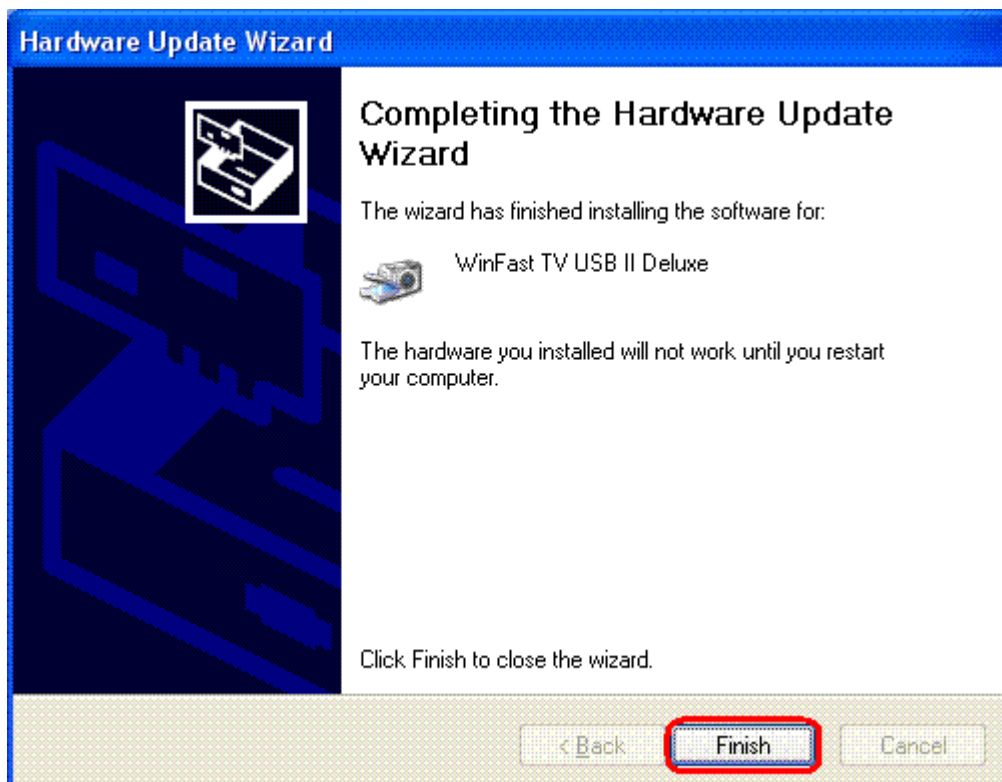
5. See below picture , and choose " Continue Anyway " :



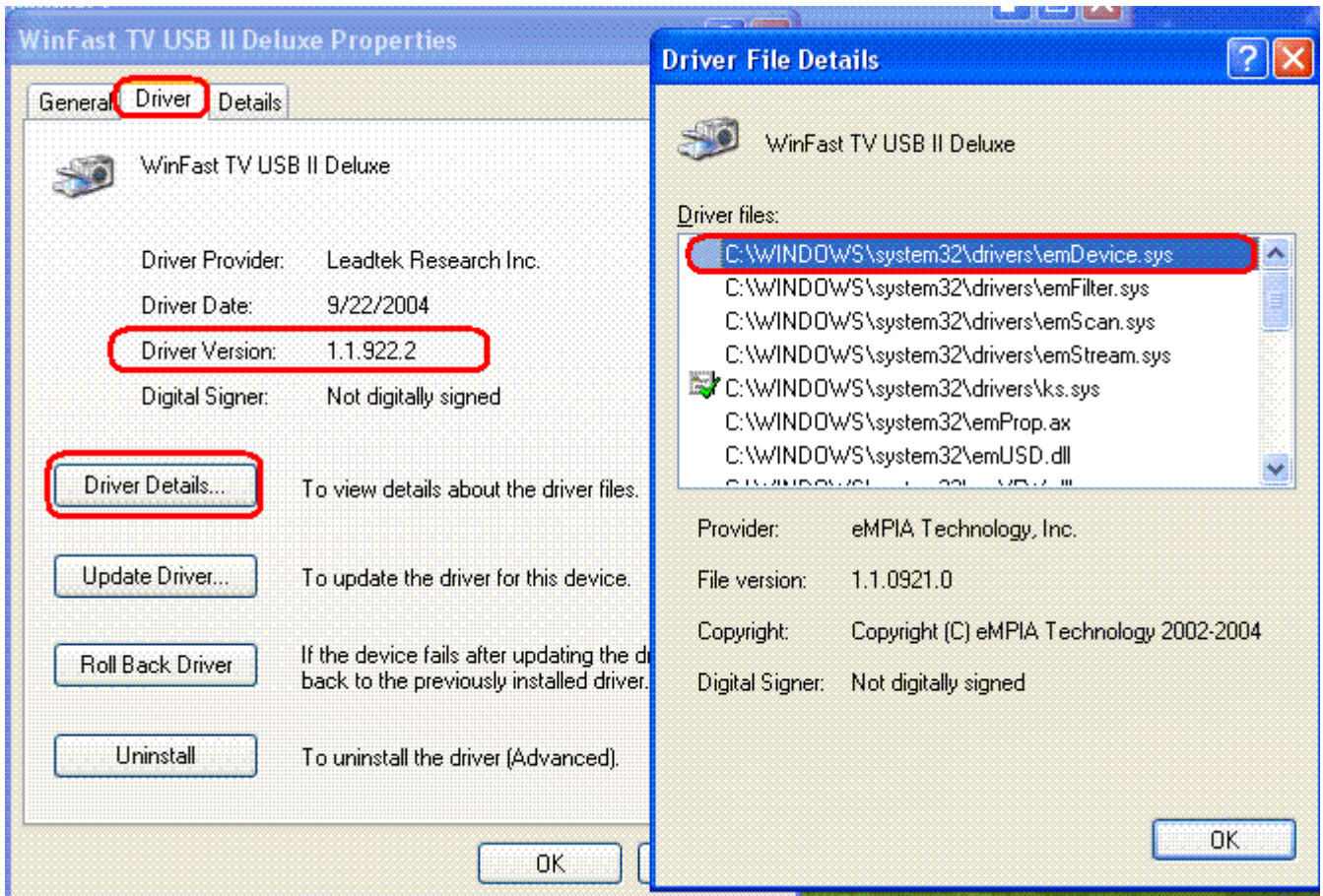
6. Press "Yes" to Overwrite the newer file.



7. Click "Finish" to finish the wizard. And that meant you update this driver successfully.



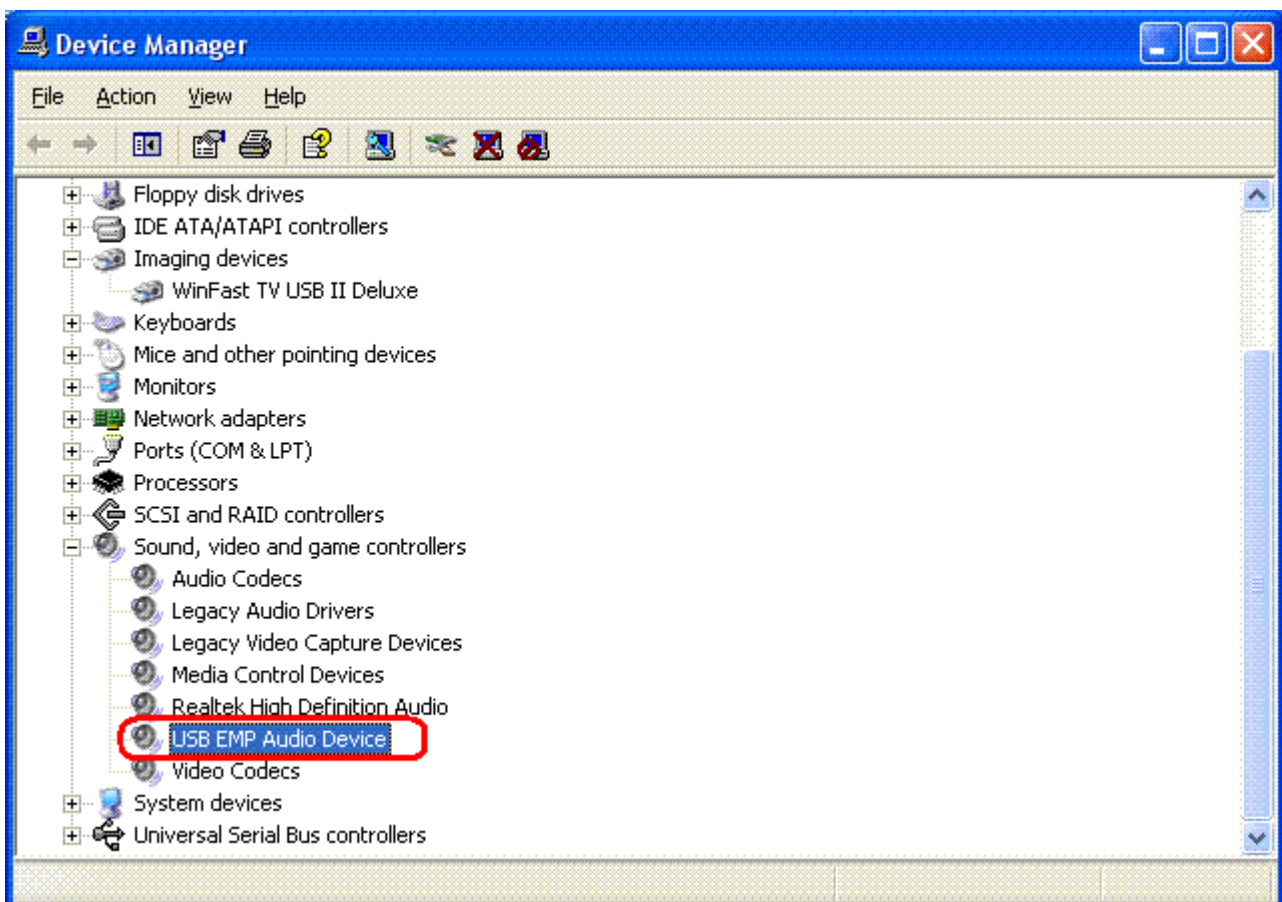
PS : The hardware you installed will not work until you restart your computer.



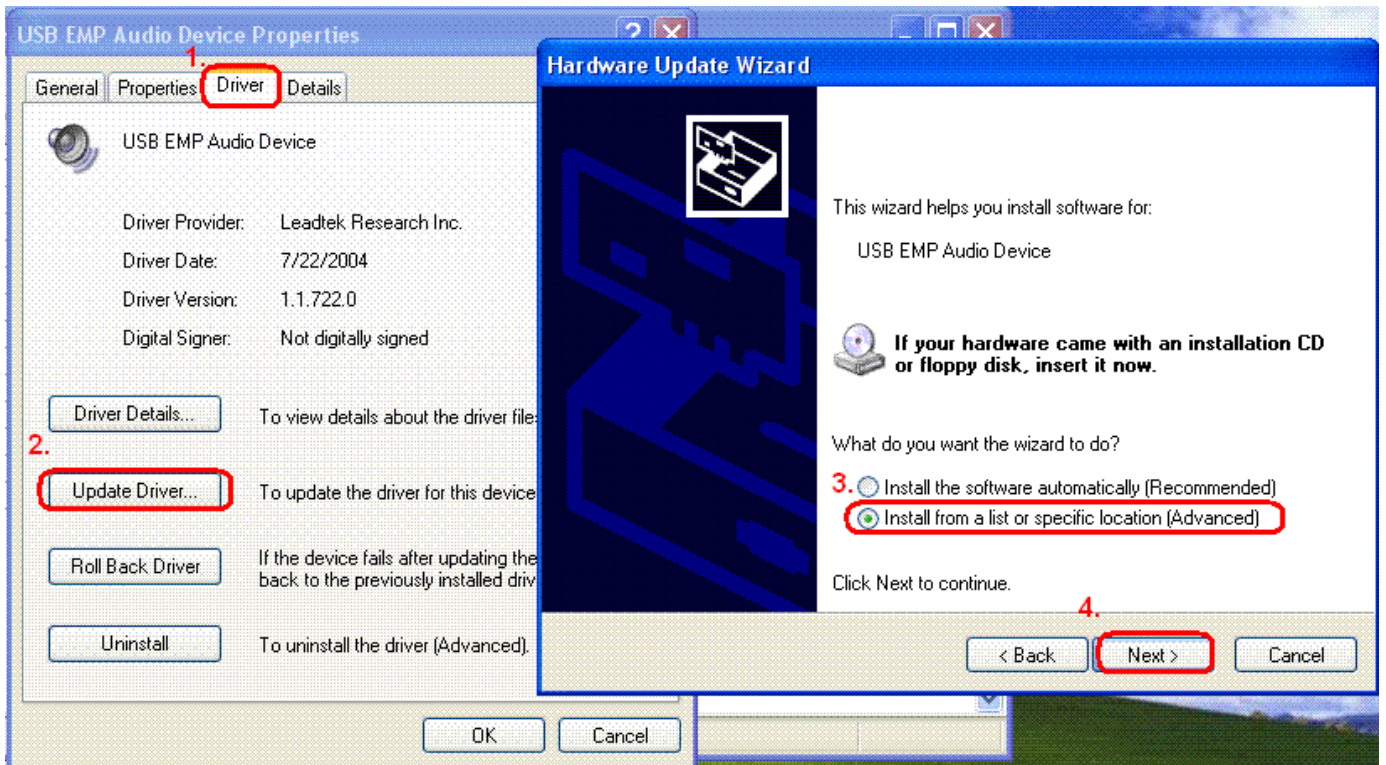
See above picture , now you can see the driver version already updated to 1.1.922.2

8. Then , you must update USB EMP Audio Device driver.

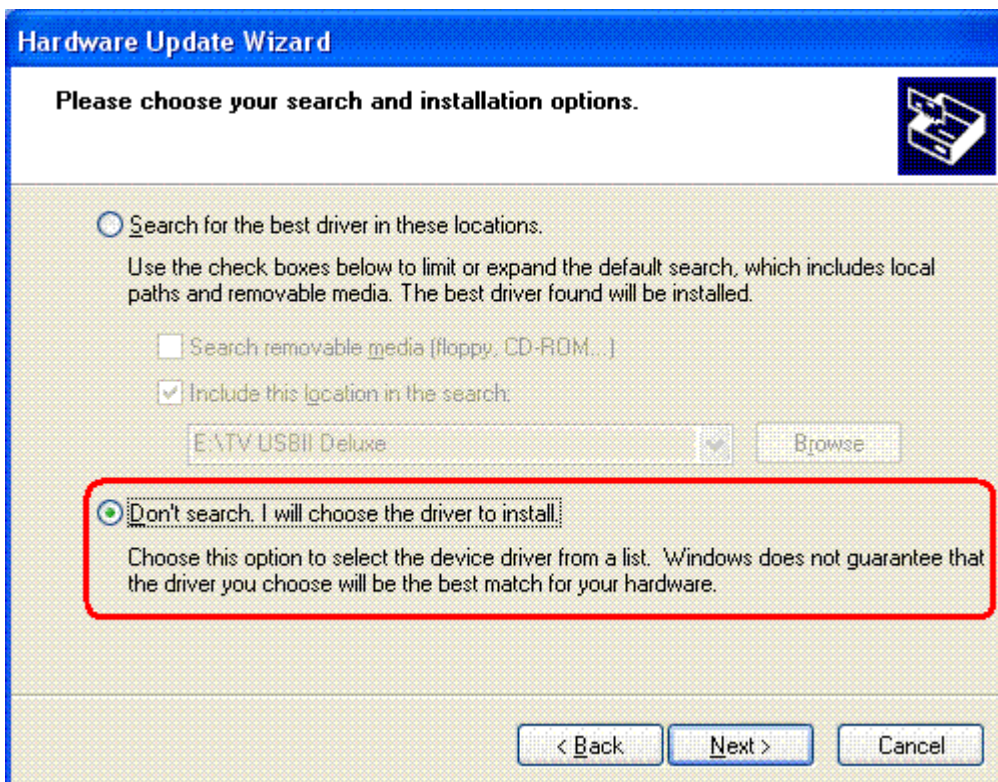
Go to Device Manager again :



9. Double click the mouse on " USB EMP Audio Device " , and you will get " USB EMP Audio Device Properties " as below picture :
 - 9-1. Choose " Driver"
 - 9-2. Select " Update Driver ...", and you will get the Hardware Update Wizard about " USB EMP Device "
 - 9-3. Select " Install from a list or specific location [Advanced] "
 - 9-4. Then press " Next > " button .

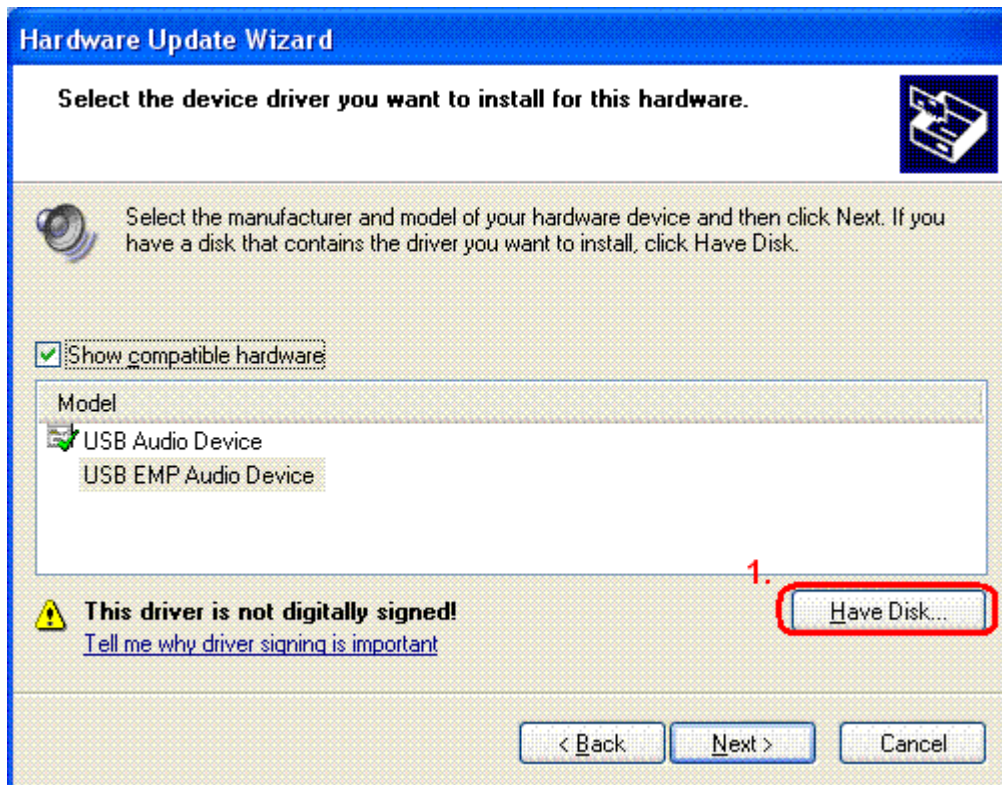


10. See the below picture , select "Don't search. I will choose the driver to install. " , then press " Next > " :



11. Then , see the below picture.

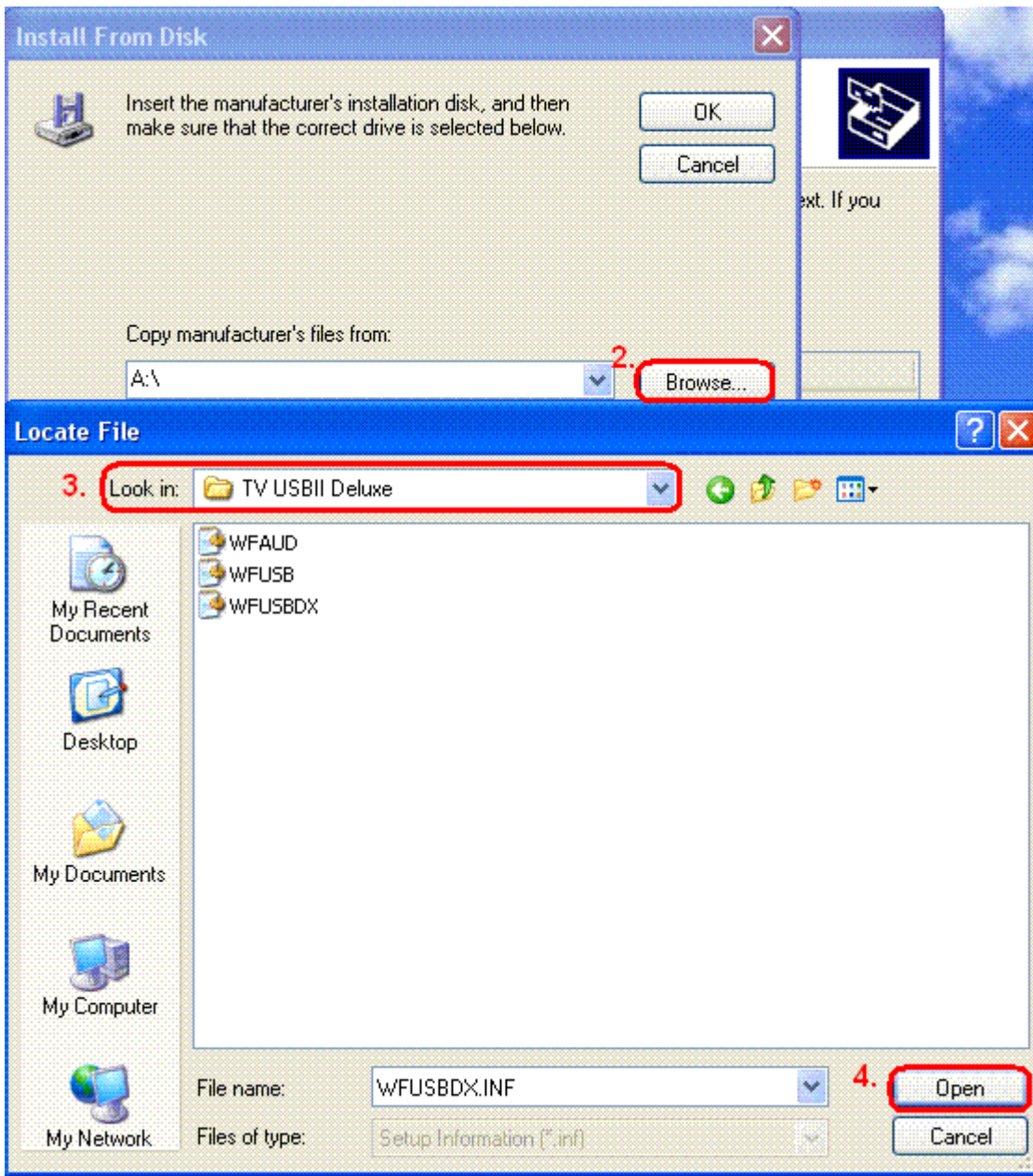
11-1. Choose " Have Disk... " :



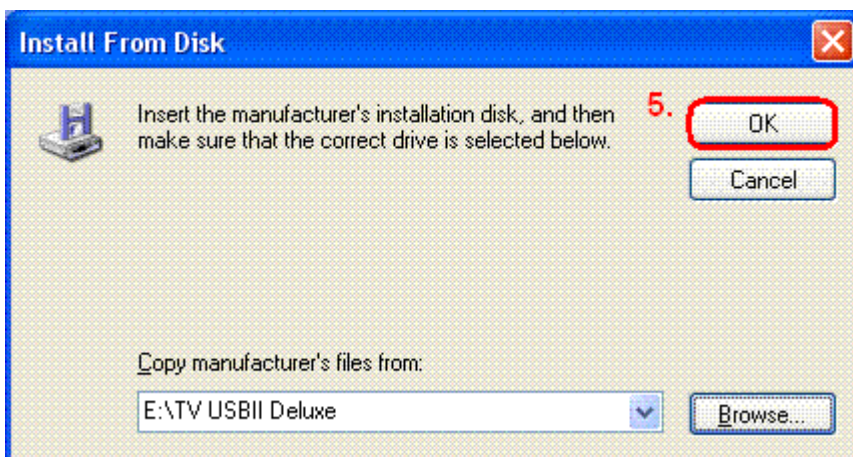
11-2. Choose " Browse... " to select the location of the latest driver.

11-3. To find the audio driver.

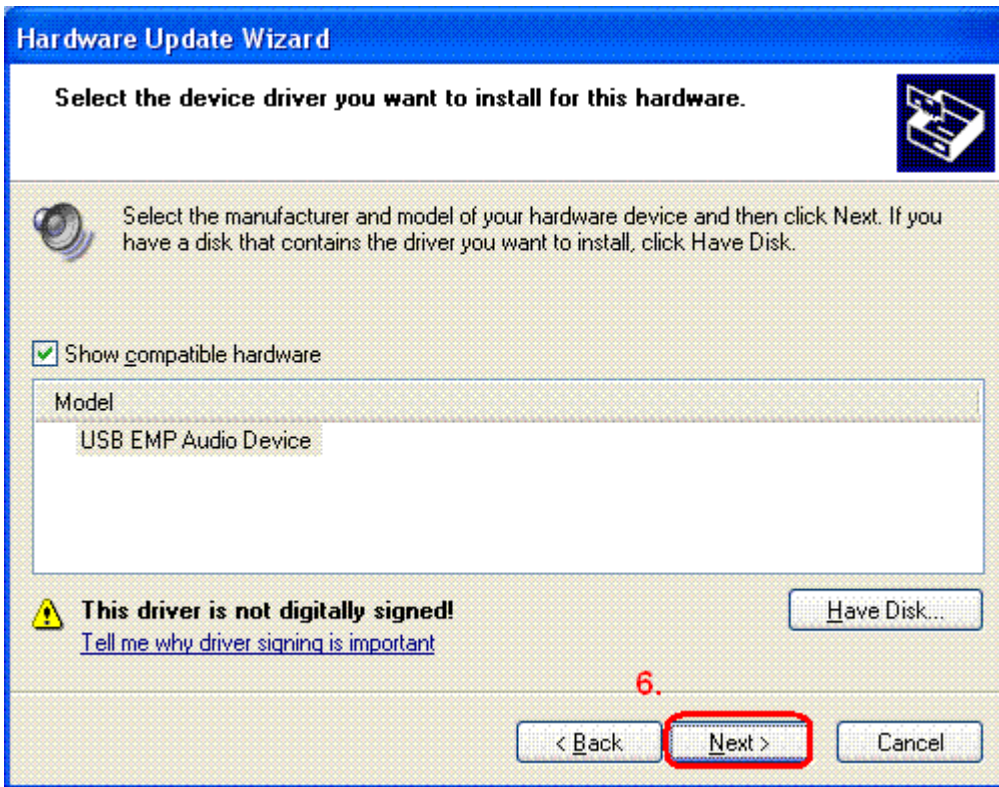
11-4. Then press " Open "



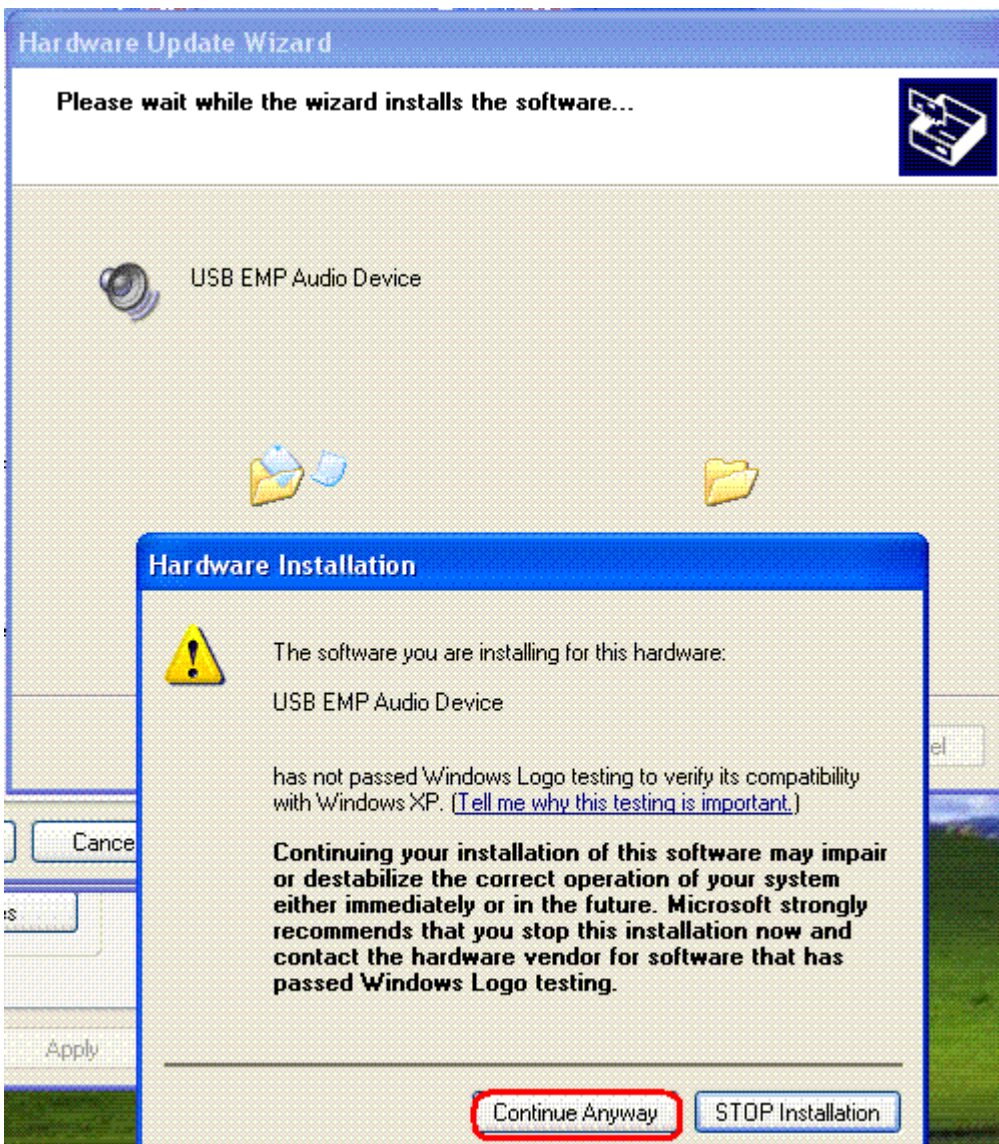
11-5. After selecting the location of USB EMP Audio device driver , press OK.



11-6. Press " Next > " .



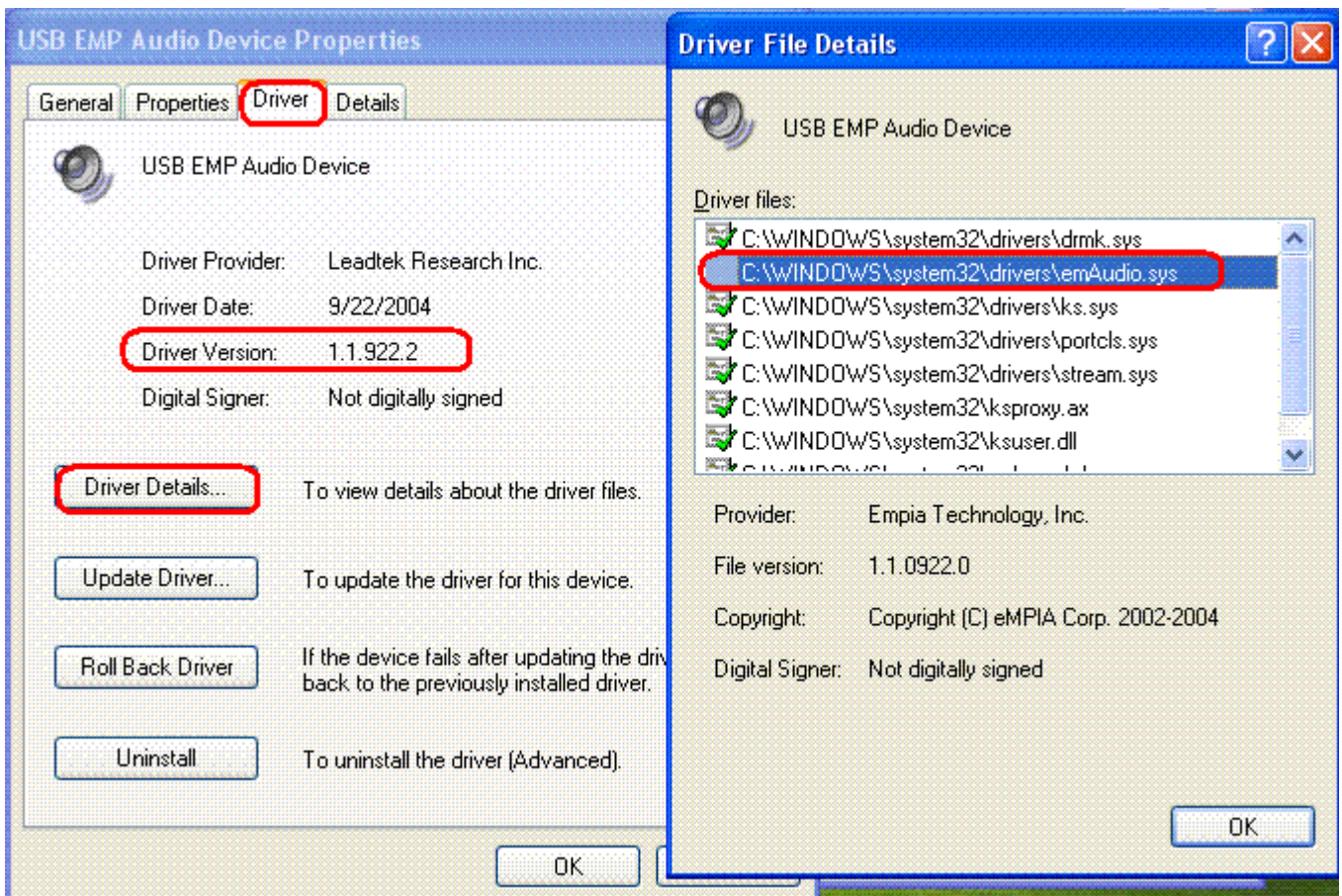
12. See below picture , and choose " Continue Anyway " :



13. Click "Finish" to finish the wizard. And that meant you update this driver successfully.



PS : The hardware you installed will not work until you restart your computer.



See above picture , now you can see the driver version already updated to 1.1.922.2

14. After reboot the system , enjoy your new driver of WinFast TV USB II Deluxe.