

Question :

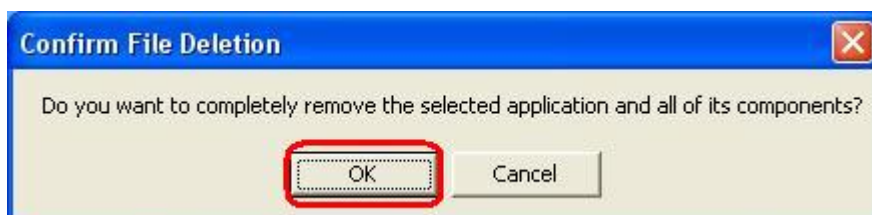
How to update PVR2000 driver after downloading from your web site ?

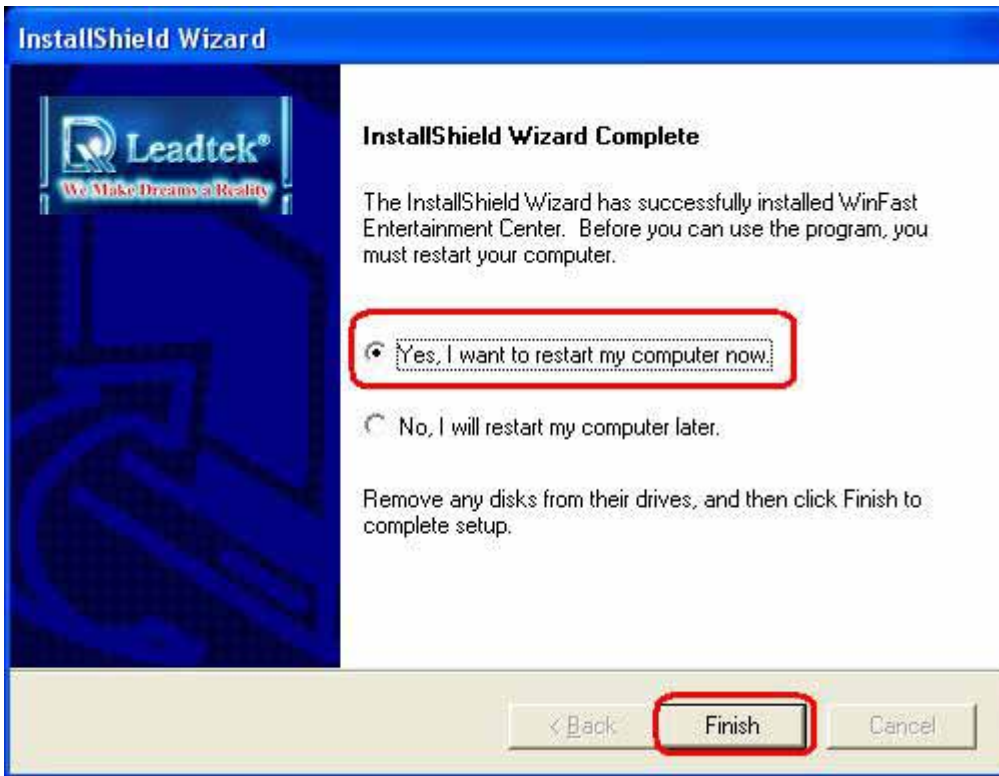
<http://www.leadtek.com.tw/eng/support/download.asp?downlineid=96&downline=WinFast%20PVR2000>

Answer :

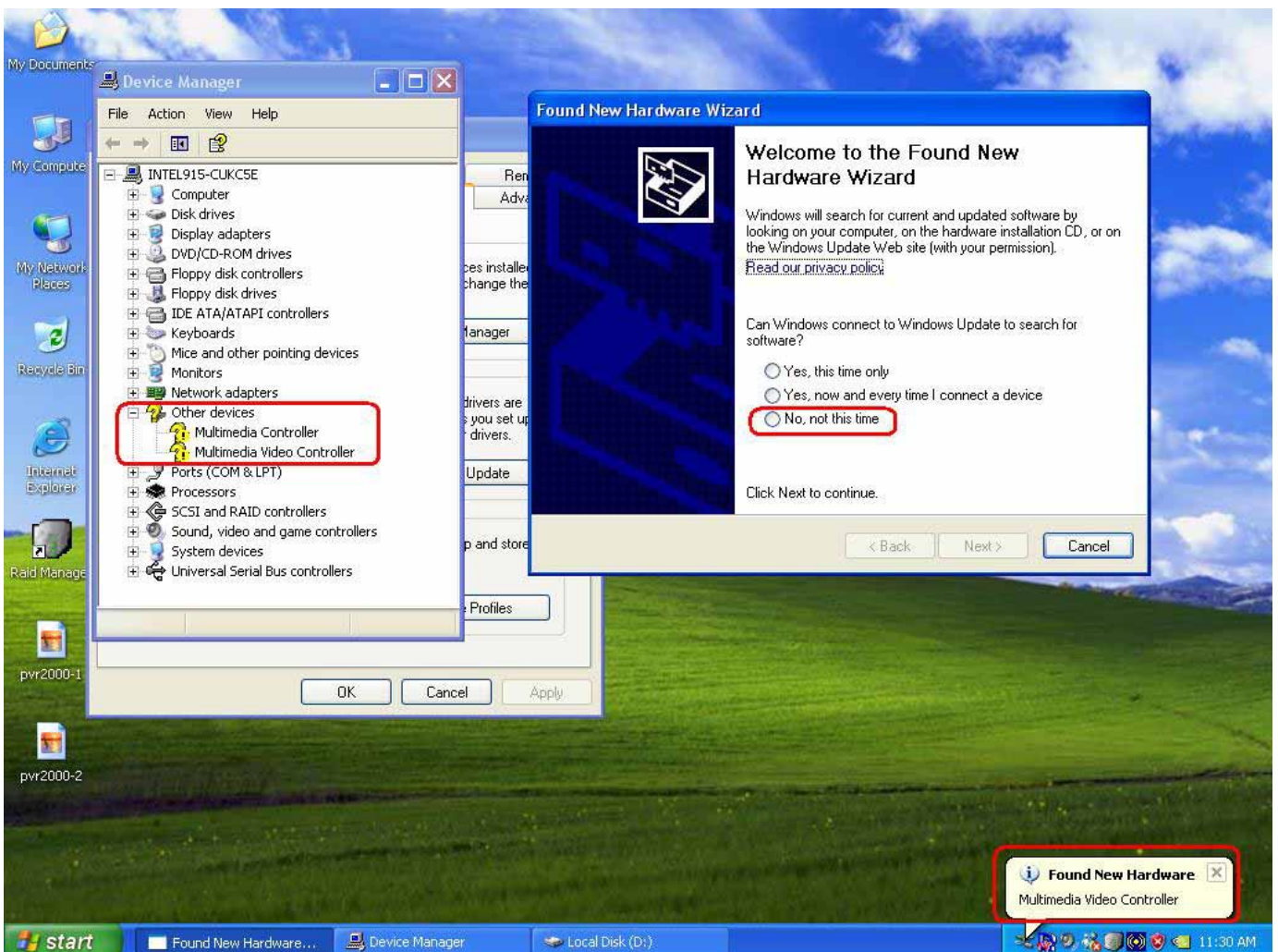
Please follow the below steps to update your tuner driver :

1. Download the tool – PVR2000Uninstall.exe from our web site , below is the link :
<http://www.leadtek.com.tw/eng/support/download.asp?downlineid=96&downline=WinFast%20PVR2000>
2. Execute PVR2000Uninstall.exe , then follow the wizard to remove the previous version of WDM driver , then restart your system.





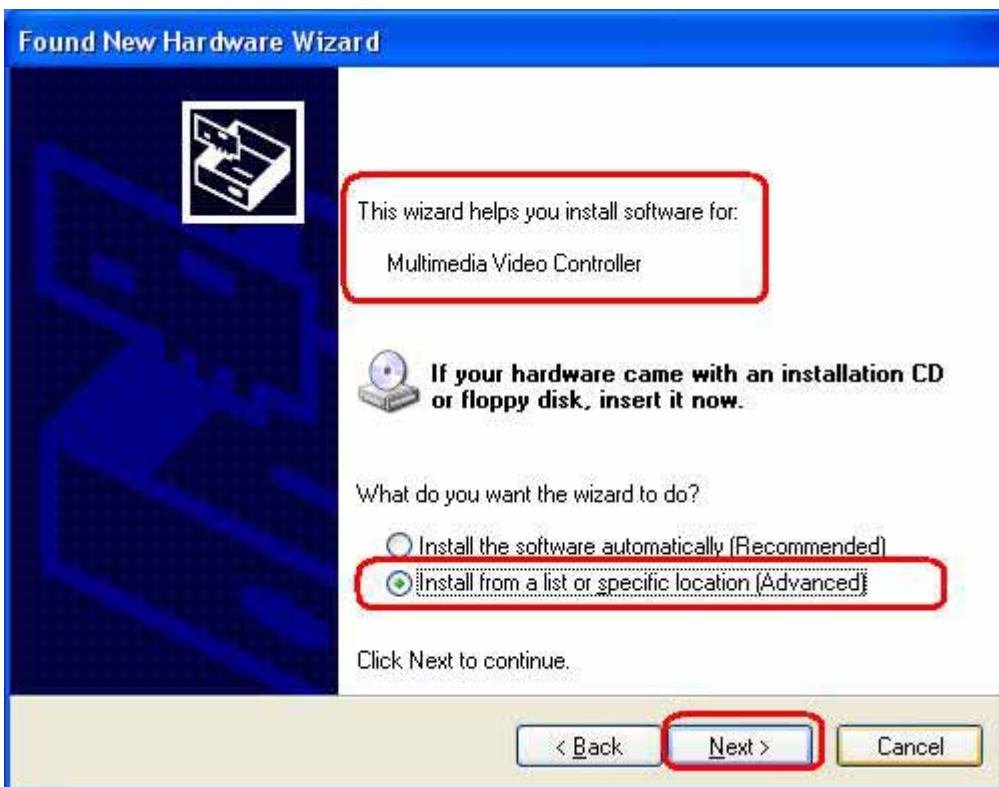
3. After rebooting , you will see the system find new hardware device on the desktop , or you can see 2 new devices showing under Device Manager :



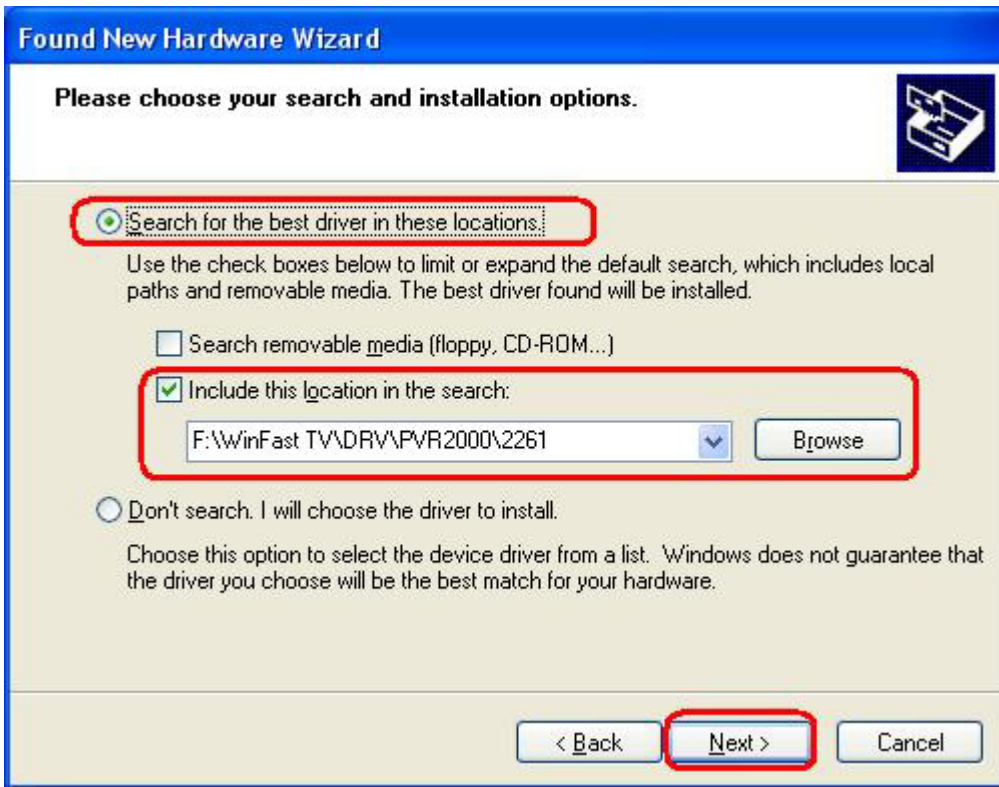
4. First , choose "No , not this time" under Found New Hardware Wizard , then press " Next > " , please see the below picture :



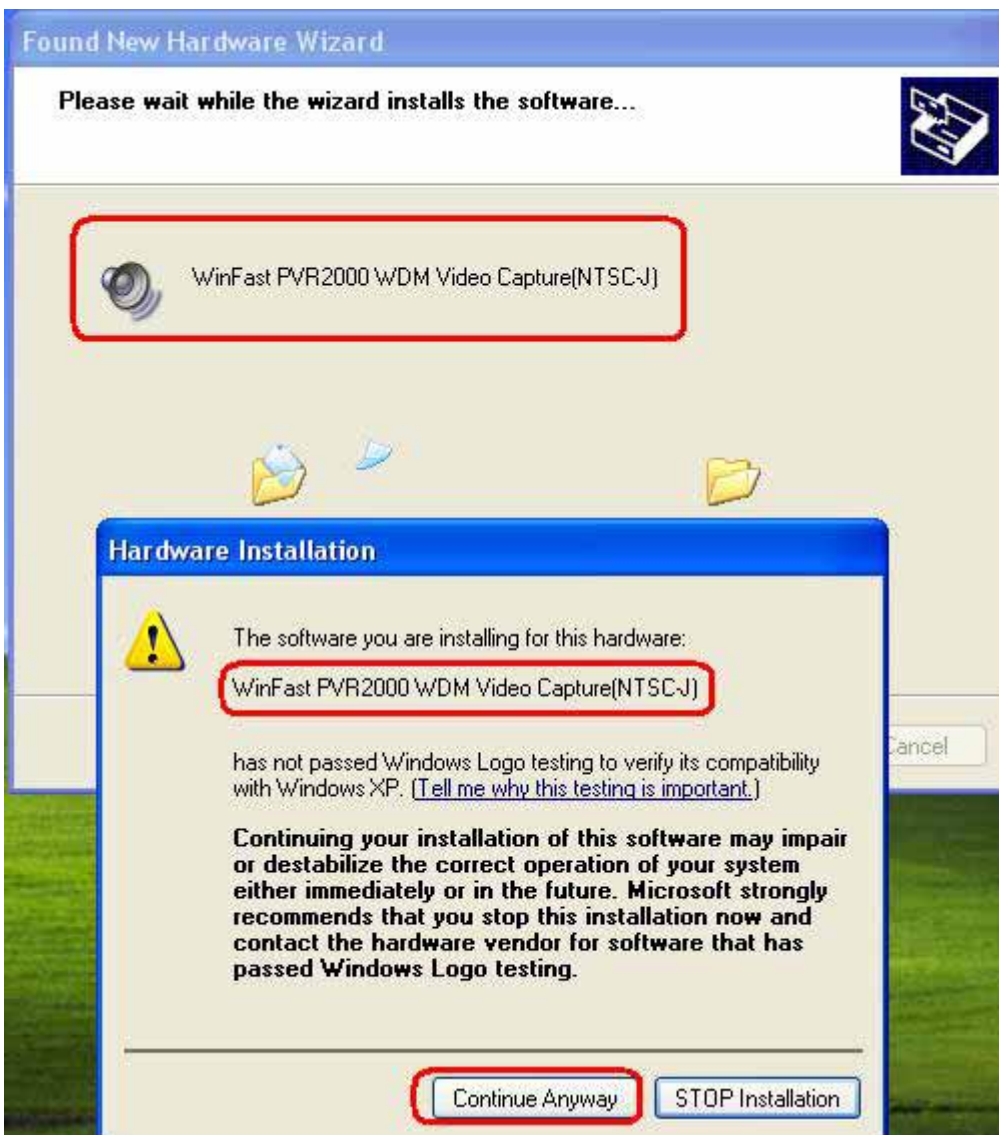
5. Then the wizard helps you install software for Multimedia Video Controller . Choose " Install from a list or specific location [Advanced] " , and click Next to continue :



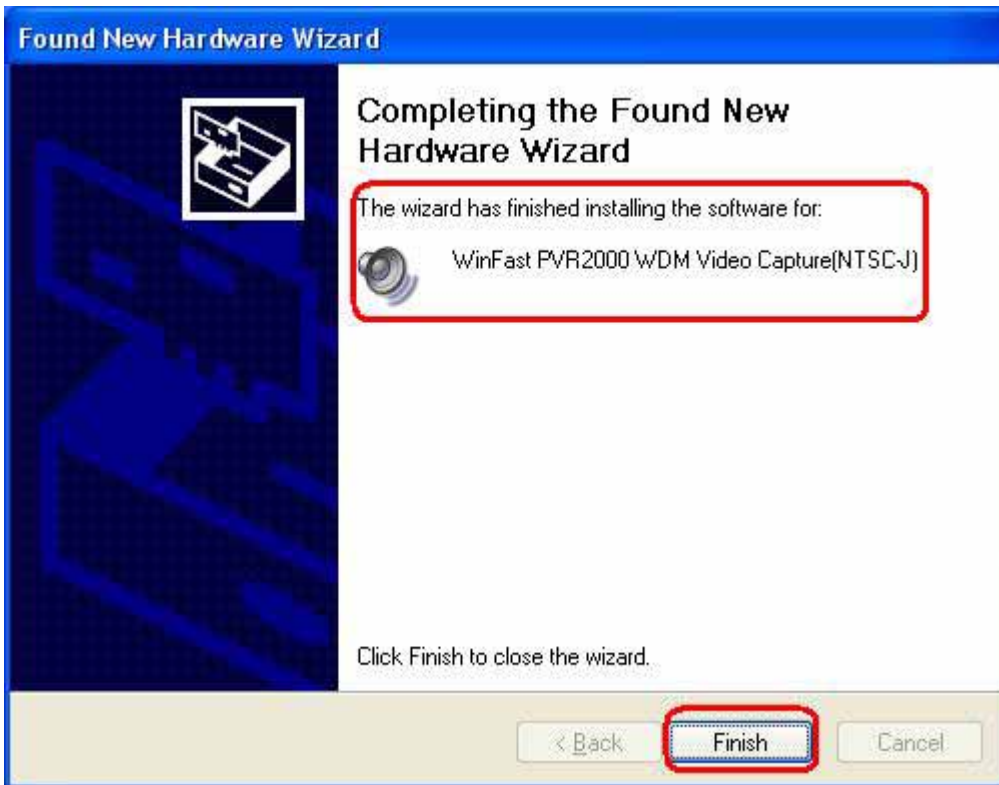
6. Choose " Search for the best driver in these locations " , select Browse to include the location of WDM driver in the search , then press Next to continue :



7. See below picture , the driver will be installed as WinFast PVR2000 WDM Video Capture , and press Continue Anyway to finish the install wizard :



8. Click Finish to complete the wizard , now you have finished installing this device -> WinFast PVR2000 WDM Video Capture :



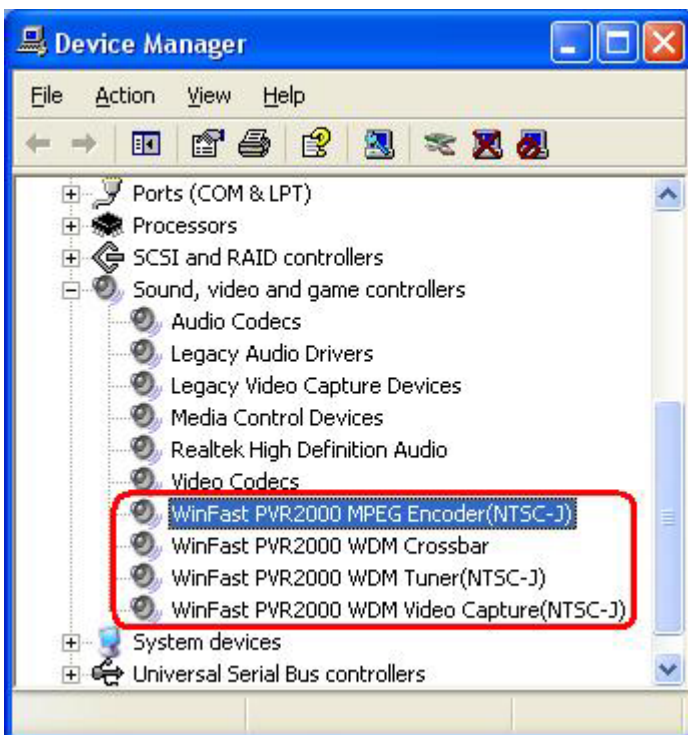
9. Then , another hardware install wizard will automatic show out on the desktop , repeat **Step 4 to Step 8** to install another 3 devices , that are :

WinFast PVR2000 WDM Tuner

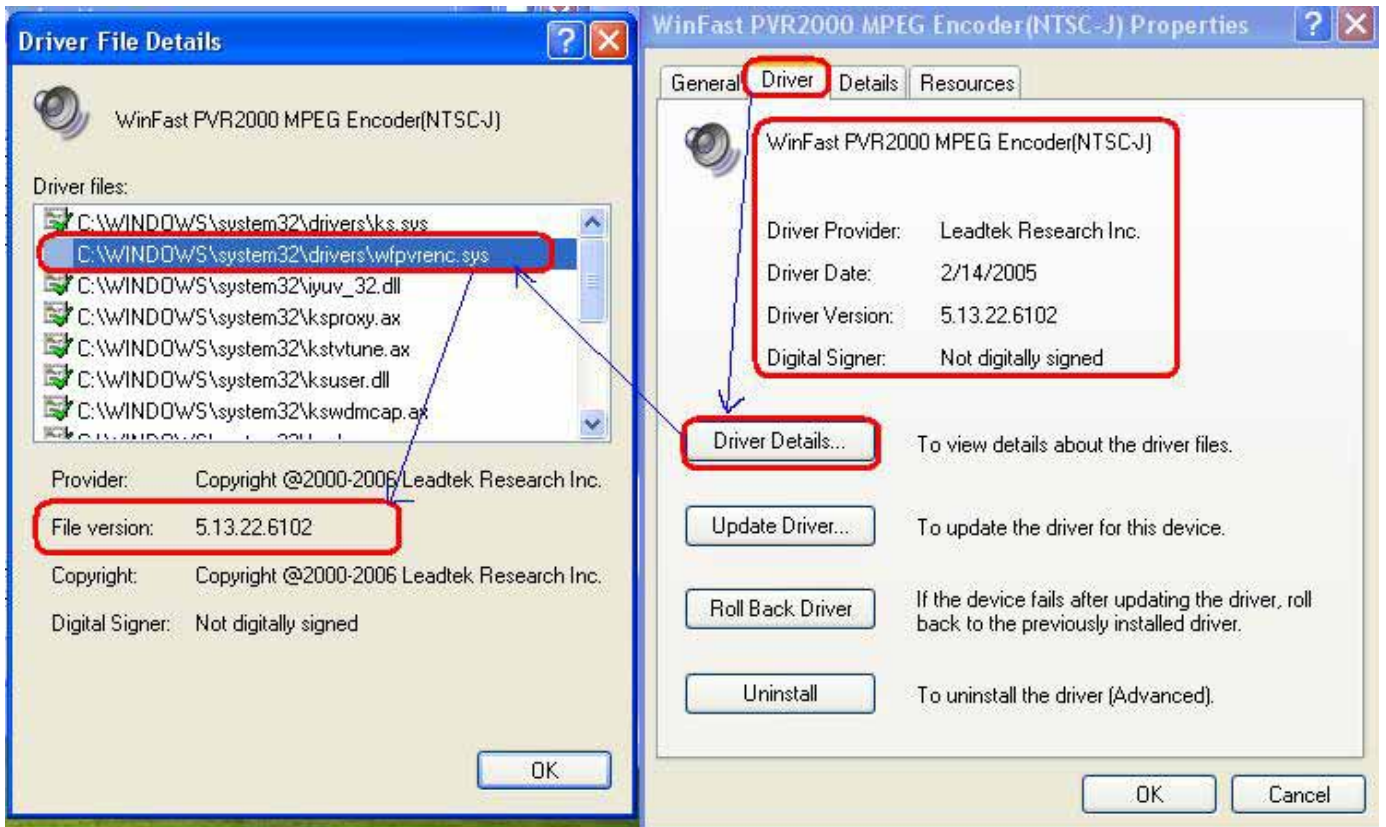
WinFast PVR2000 WDM Crossbar

WinFast PVR2000 MPEG Encoder

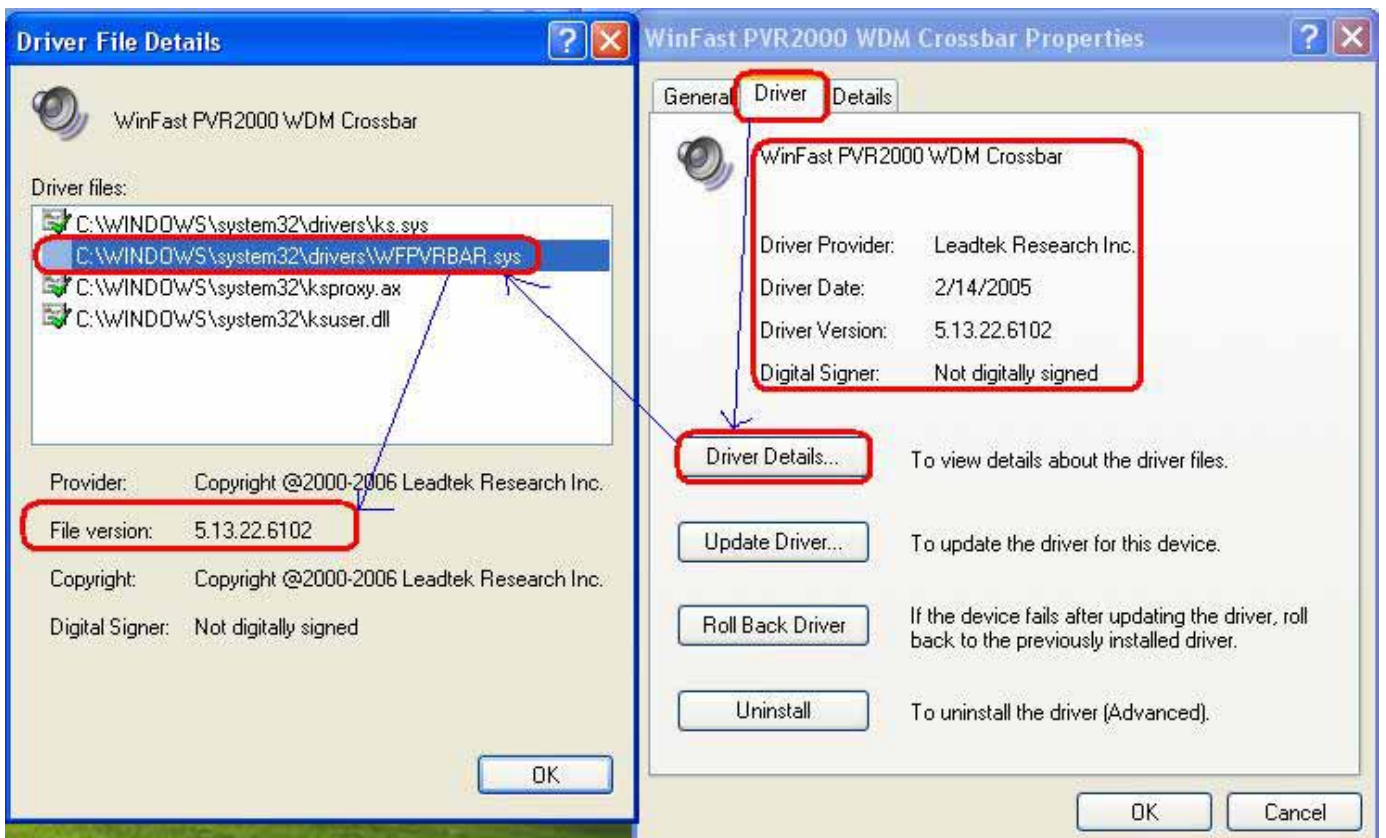
10. After finishing all 4 devices , you can see them under Device Manager :



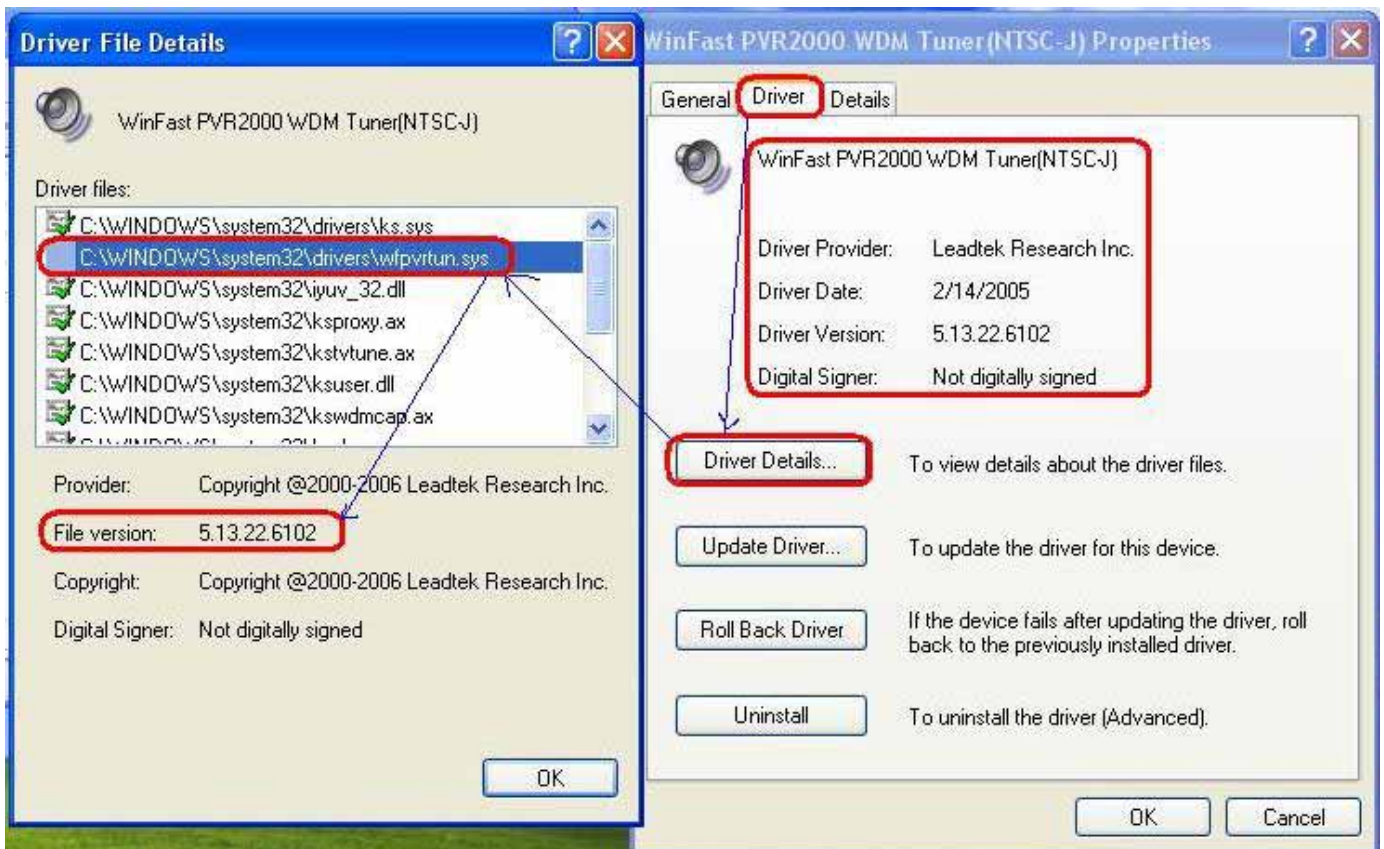
11. Make sure that all the 4 devices have the same version of WDM driver , how to check WDM driver version , please see below picture :



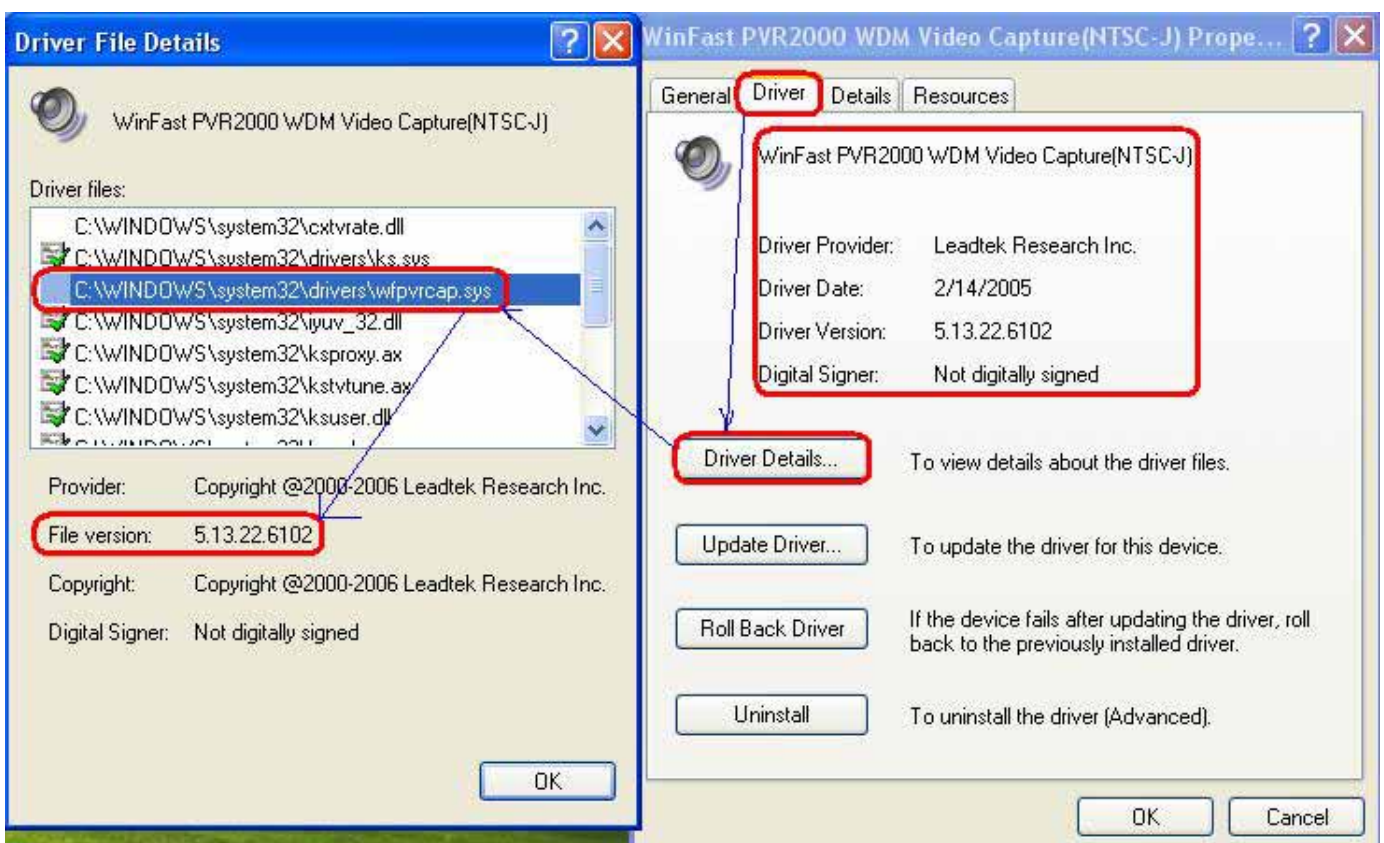
WinFast PVR2000 MPEG Encoder



WinFast PVR2000 WDM Crossbar



WinFast PVR2000 WDM Tuner



WinFast PVR2000 WDM Video Capture